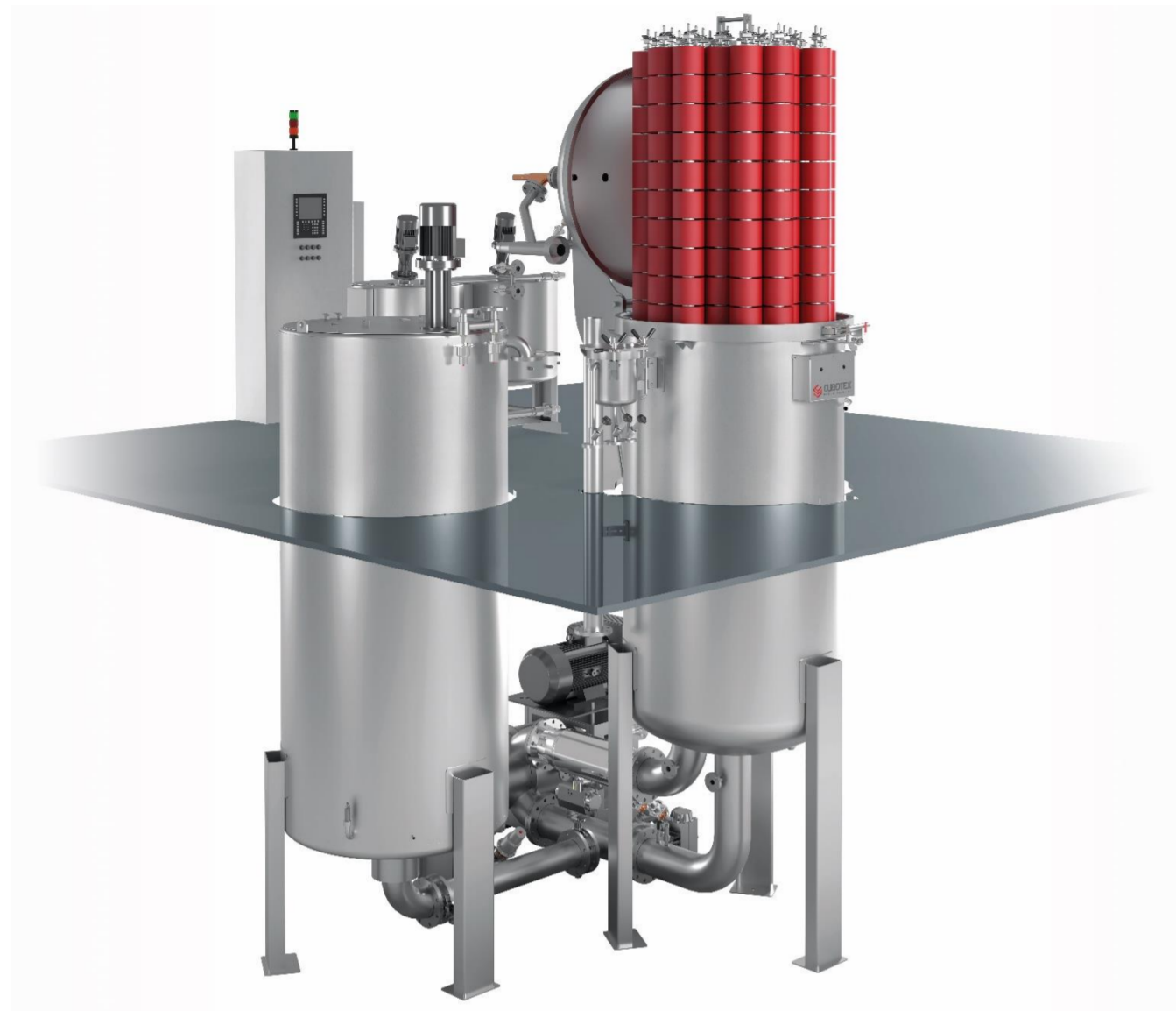




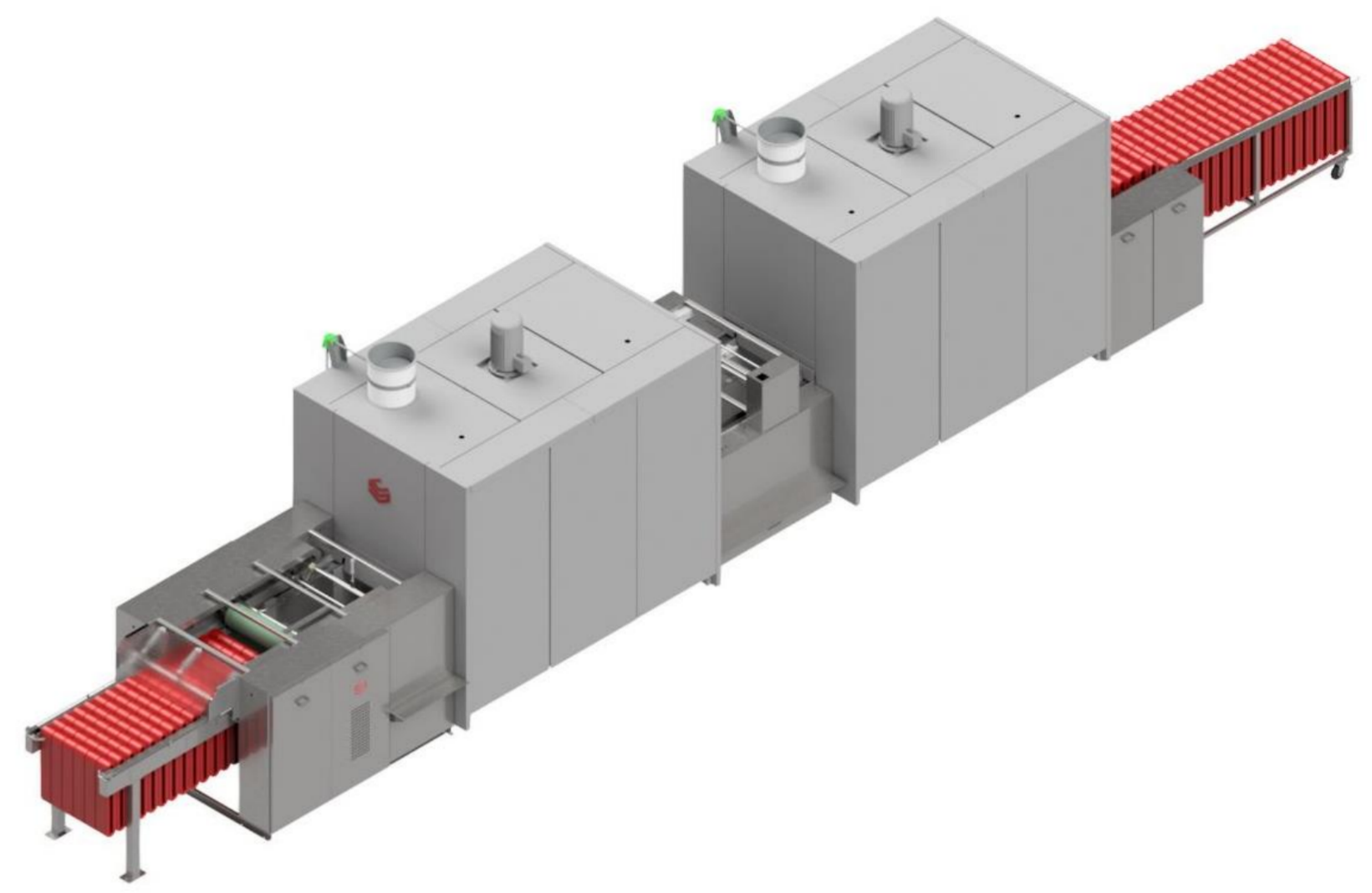
CUBOTEX
DYEING MACHINES AND DRYERS



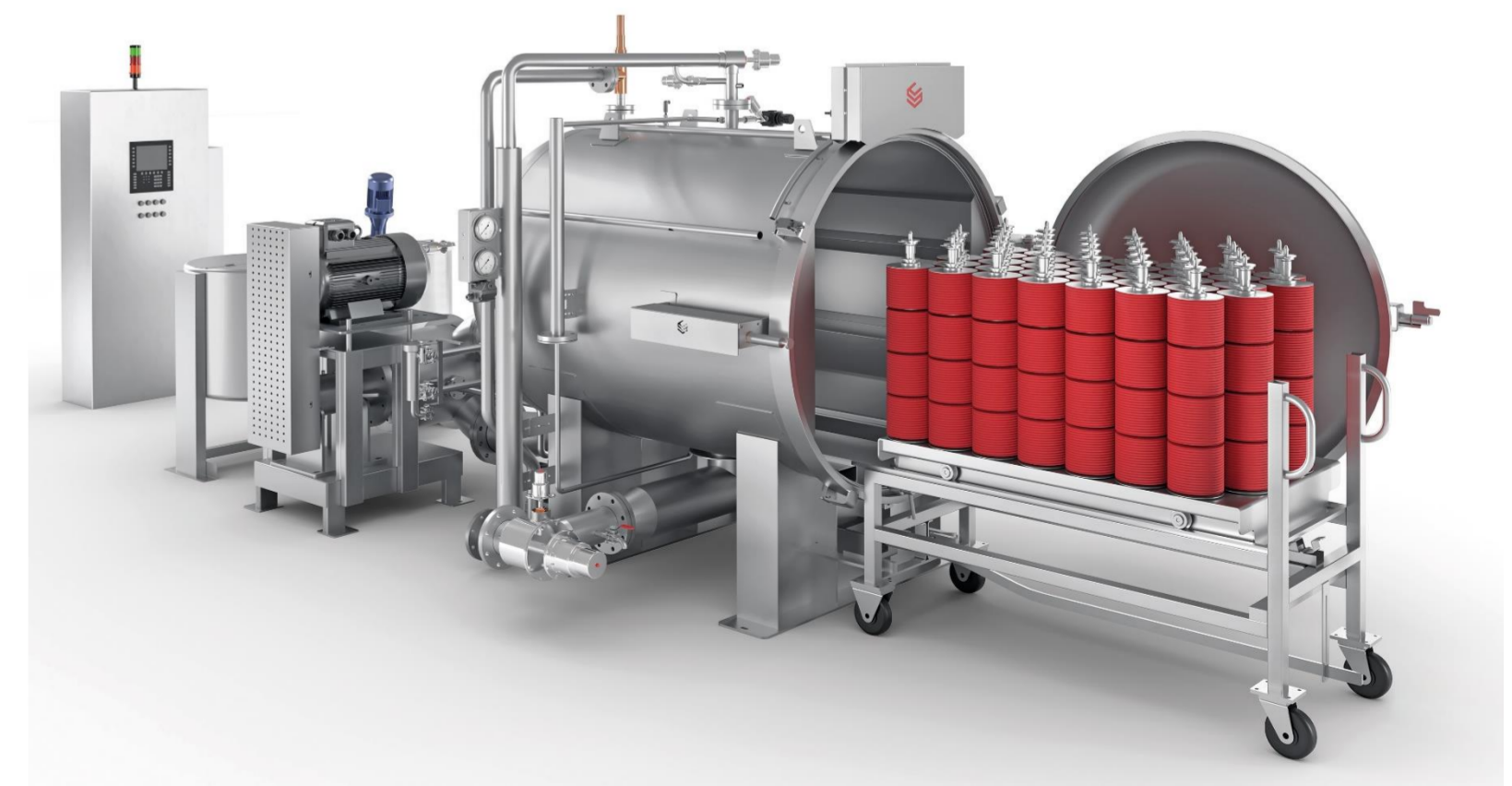
Dancing with Colors



 **CUBOTEX**
DYEING MACHINES AND DRYERS



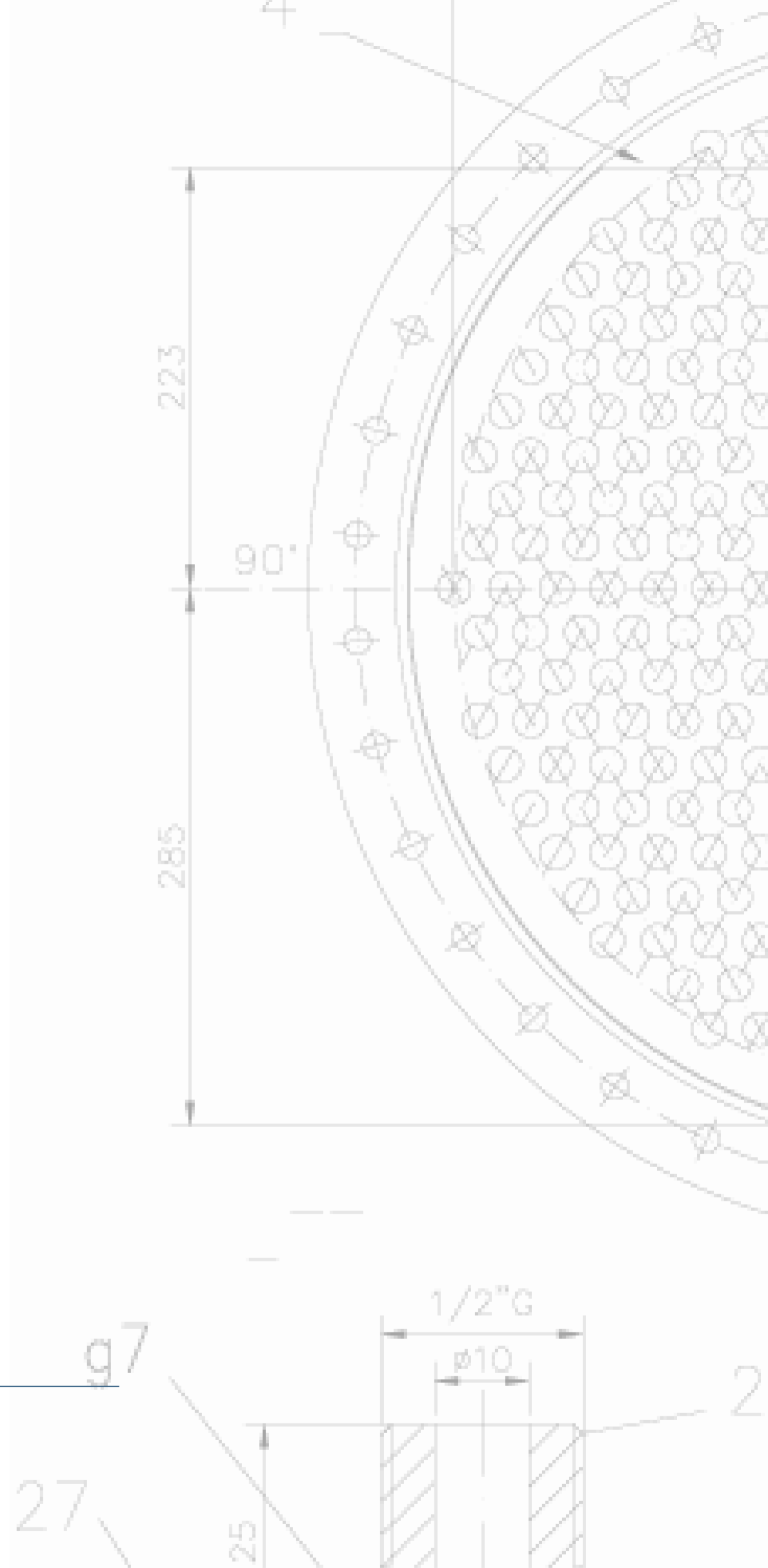
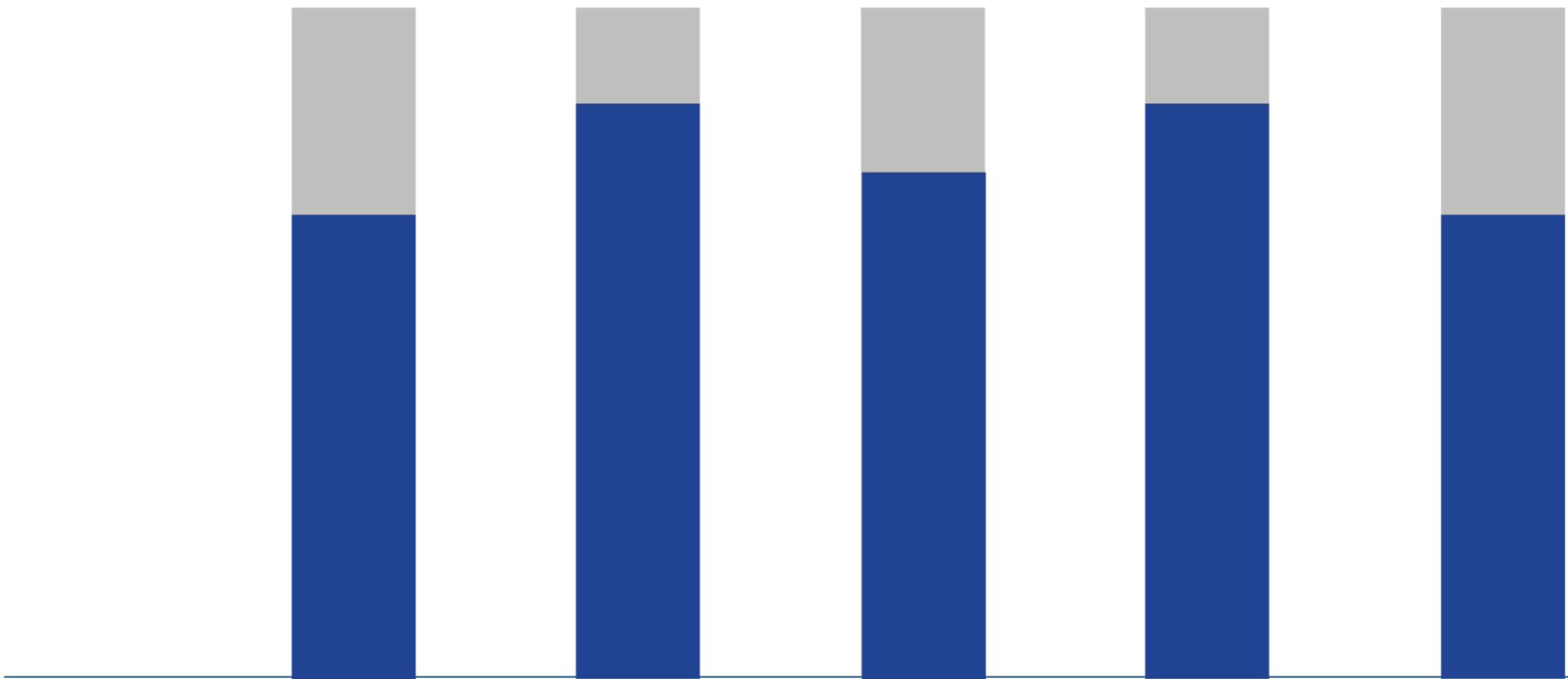
DYEVELOPING TECHNOLOGY.



REPEATED ORDER RATE WITHIN 5 Y

100%

- Total customers of the year
 - Customers who repeated the order and bought within the 5 previous years.
- Others did not expand.



CUBOTEX

INFORMATION

Year of foundation: 1985

Location: Pregnana milanese, Milano

Production site: 2.500m²



CUSTOMER LOCATION



400

Customers worldwide in 45 Countries



2400

Delivered machines

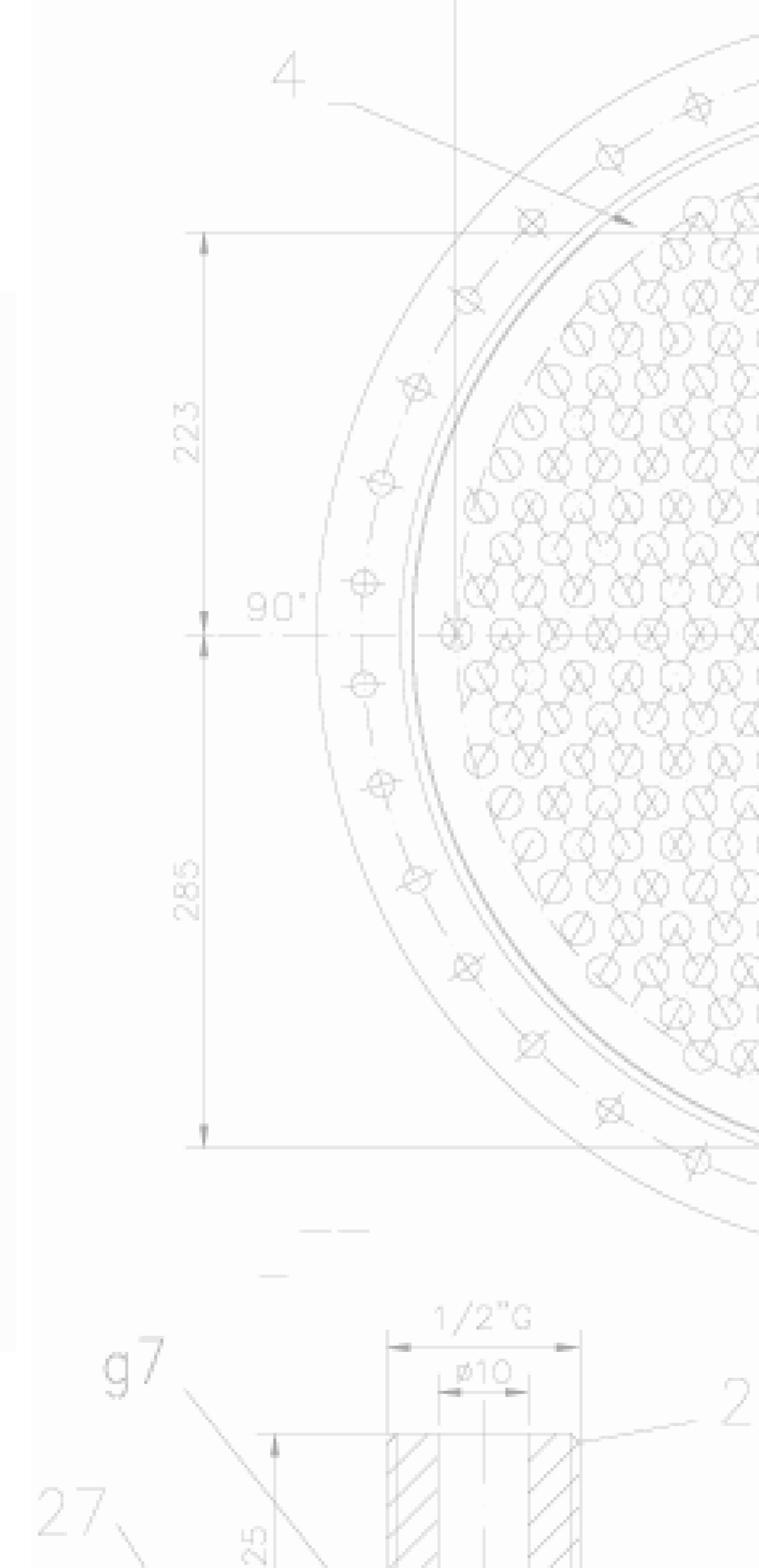
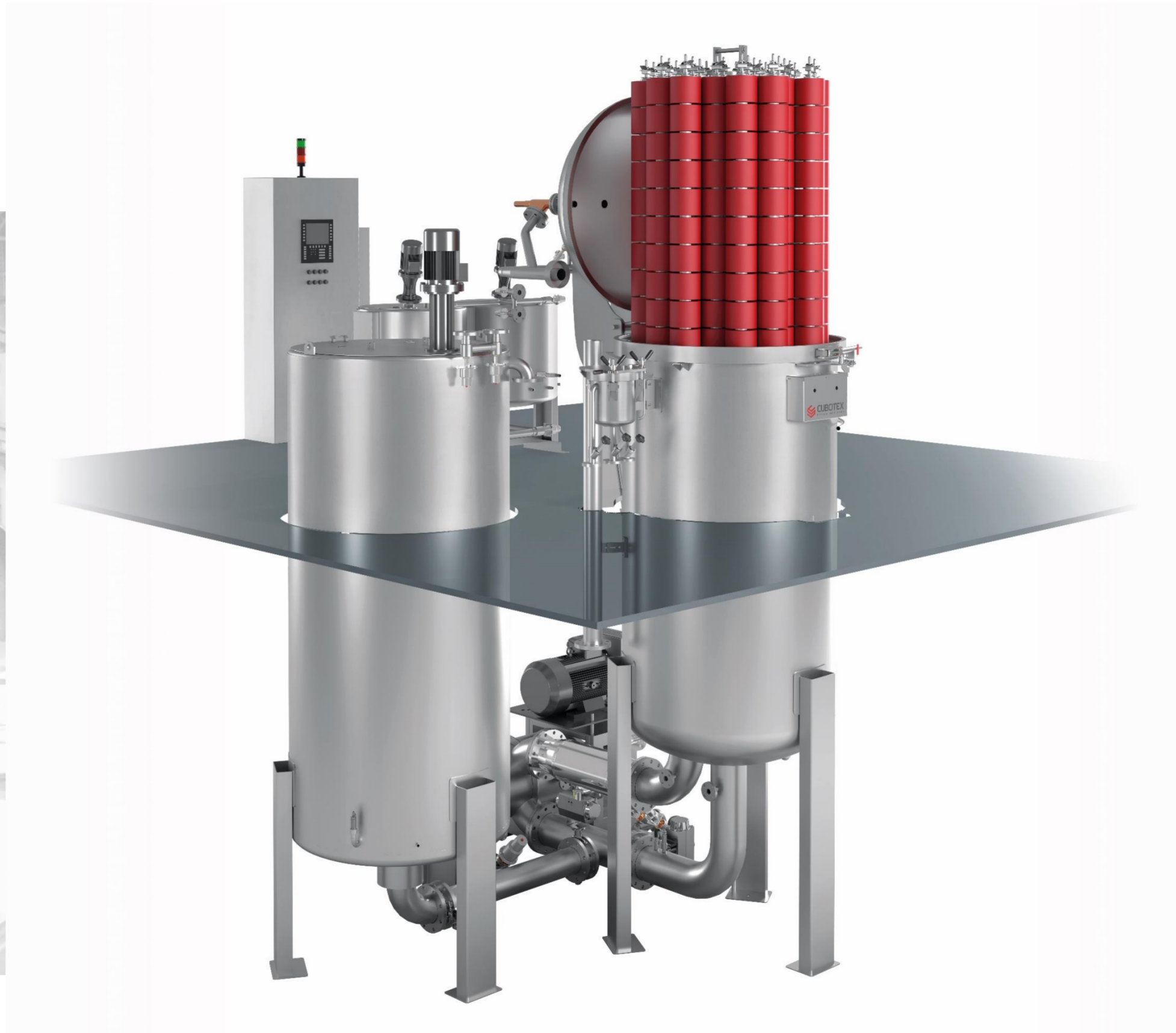




**Your partner
to dye any
kind of fibre**

PRODUCT RANGE

Yarn/fiber/tow dyeing – Vertical Machines



HANES
Brands Inc

 **winsome**
Textile Industries Ltd.

 **FILMAR**

PRODUCT RANGE – DYEFLEX

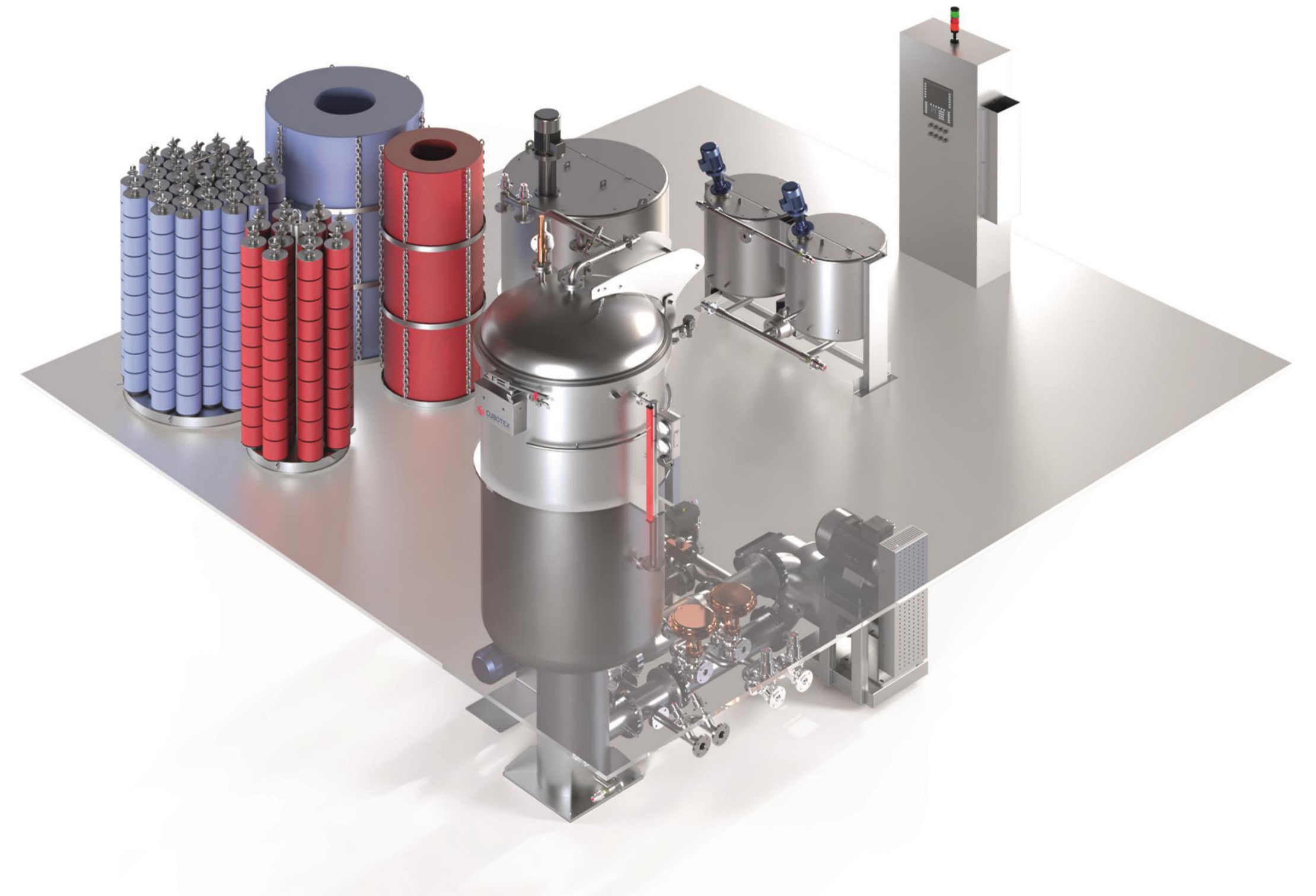
PATENTED TECHNOLOGY

One machine suitable to receive 2 different carriers having different diameters

12 different loading configurations in yarn dyeing

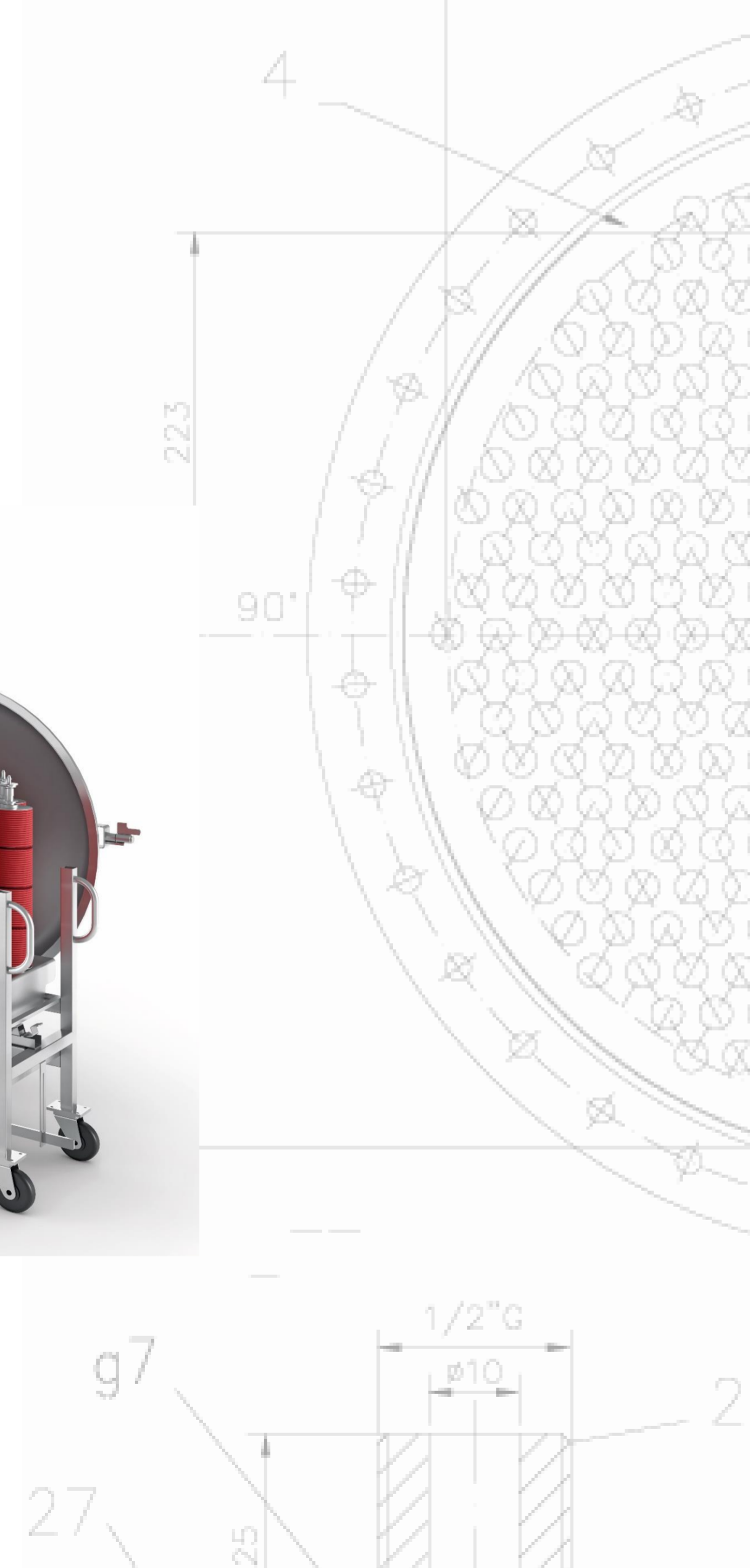
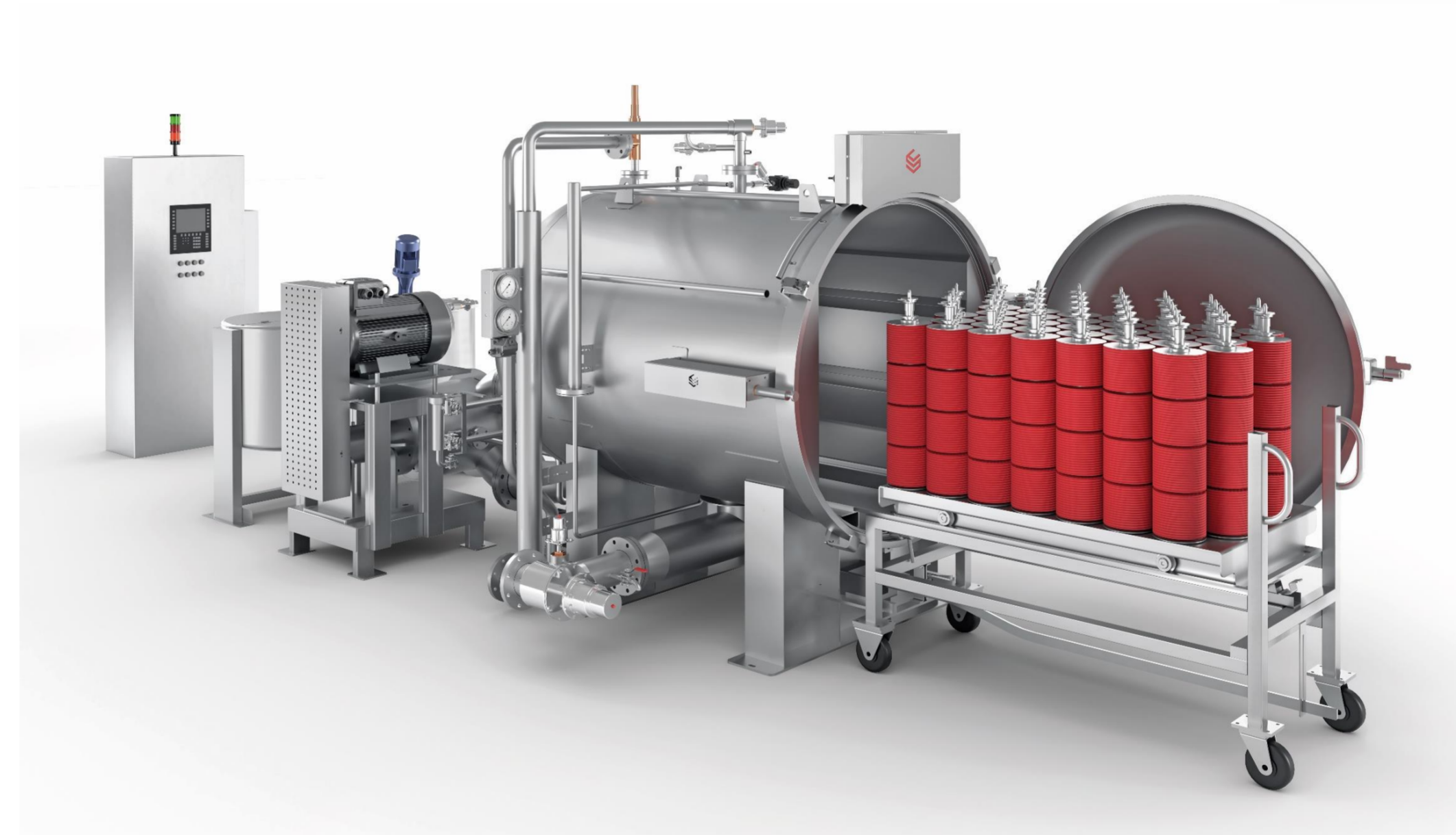
4 different loading configurations in fibre dyeing

Example: The same machine can dye from 25 to 50 kg and from 250 to 500 kg.



PRODUCT RANGE

Yarn/tops dyeing – Horizontal Machines



CALZEDONIA

PRODUCT RANGE

Hank dyeing – Cabinet + Spray dyeing technology



PRODUCT RANGE

Filament elastic yarn dyeing – Pantyhose dyeing



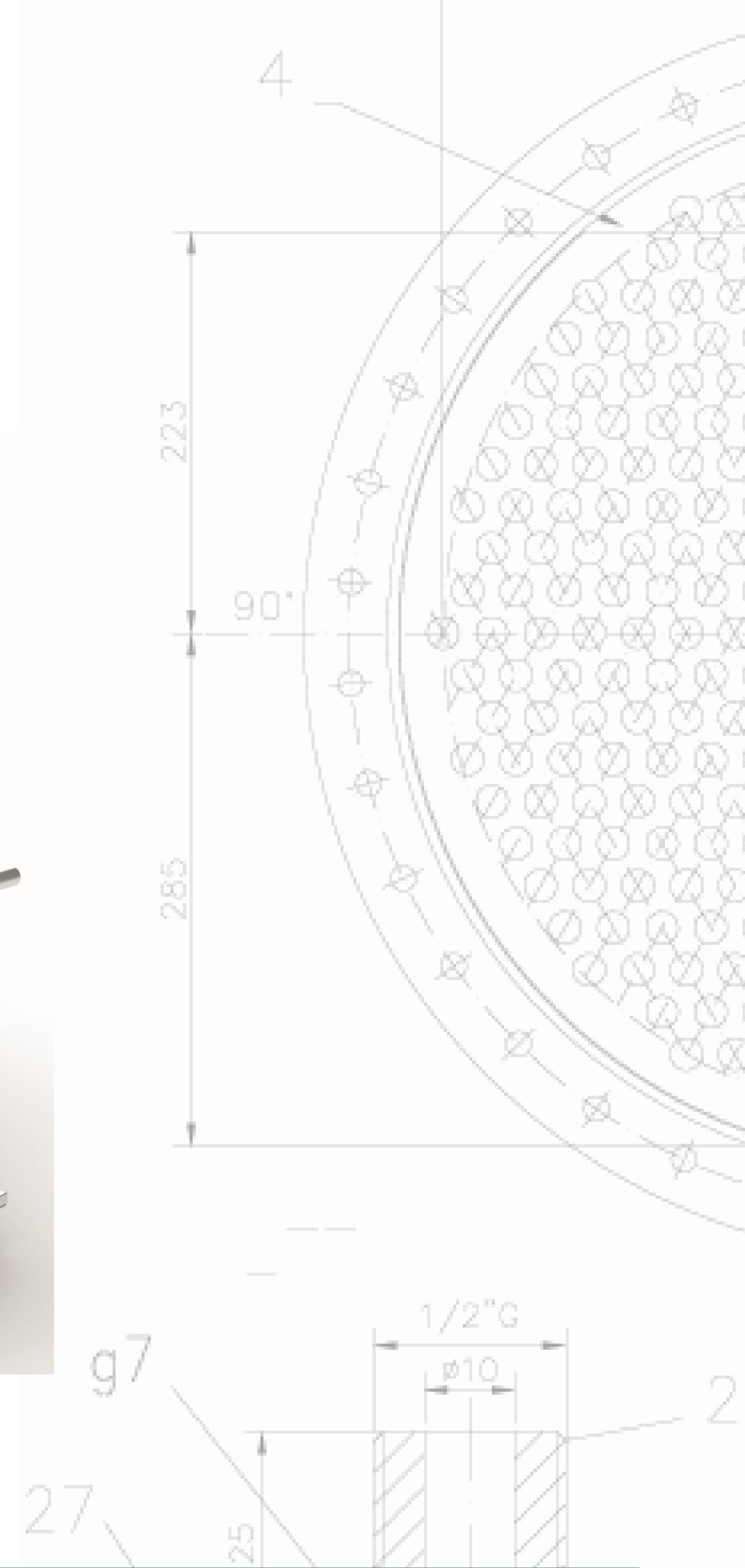
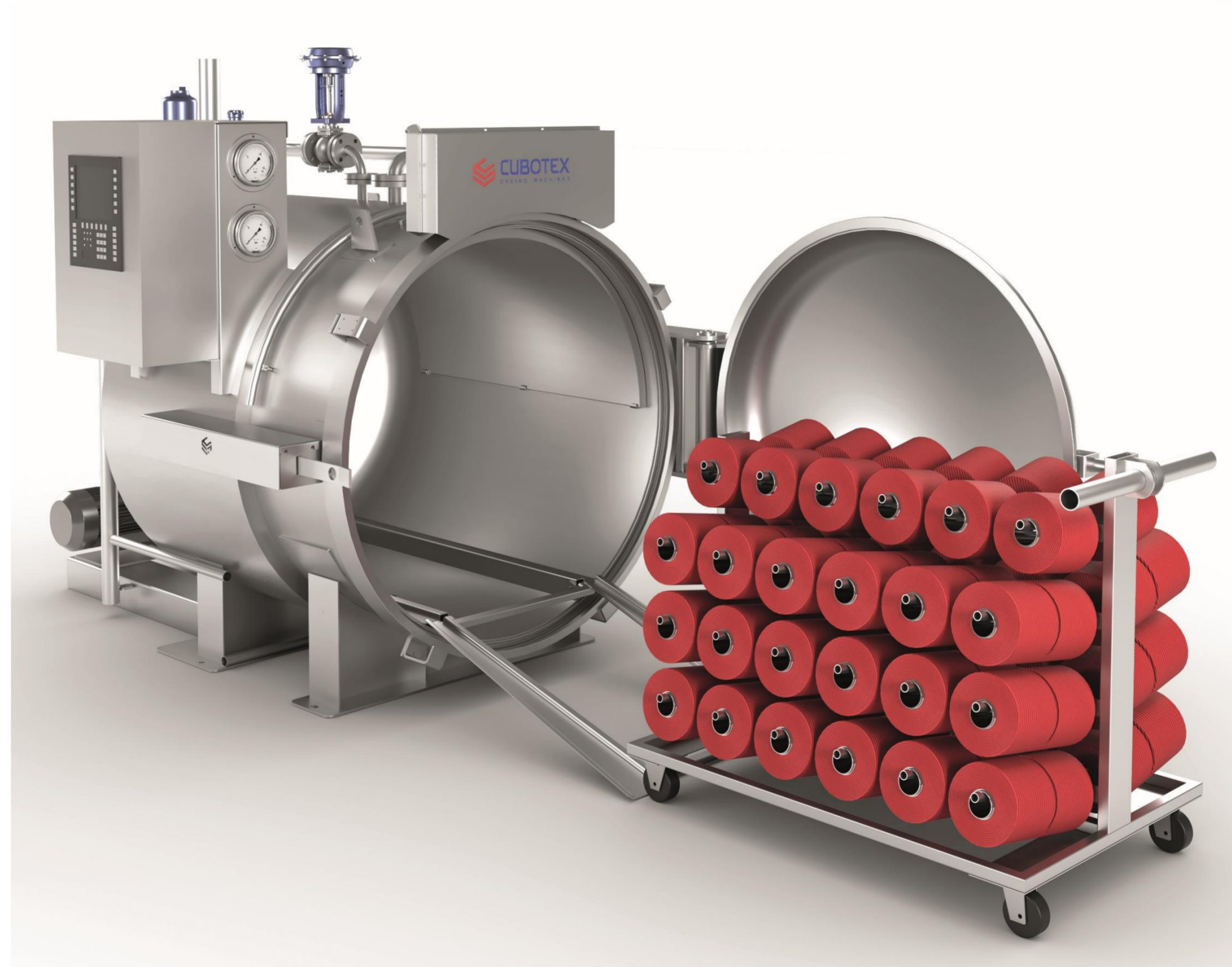
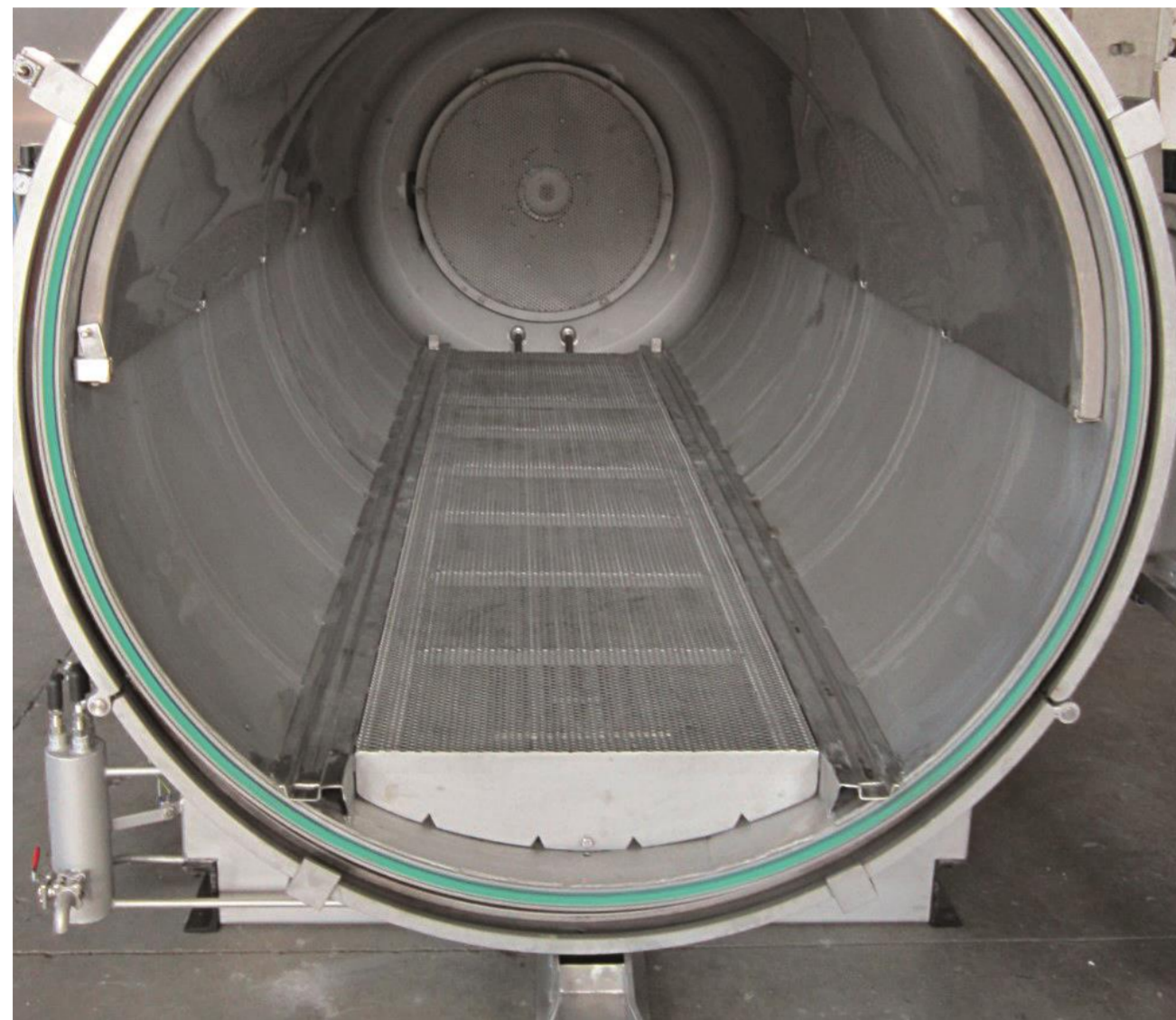
PRODUCT RANGE

Pantyhose dyeing in cabinet machines with drawers



PRODUCT RANGE

Vacuum steamers



PRODUCT RANGE

Laboratory dyeing machines of any capacity

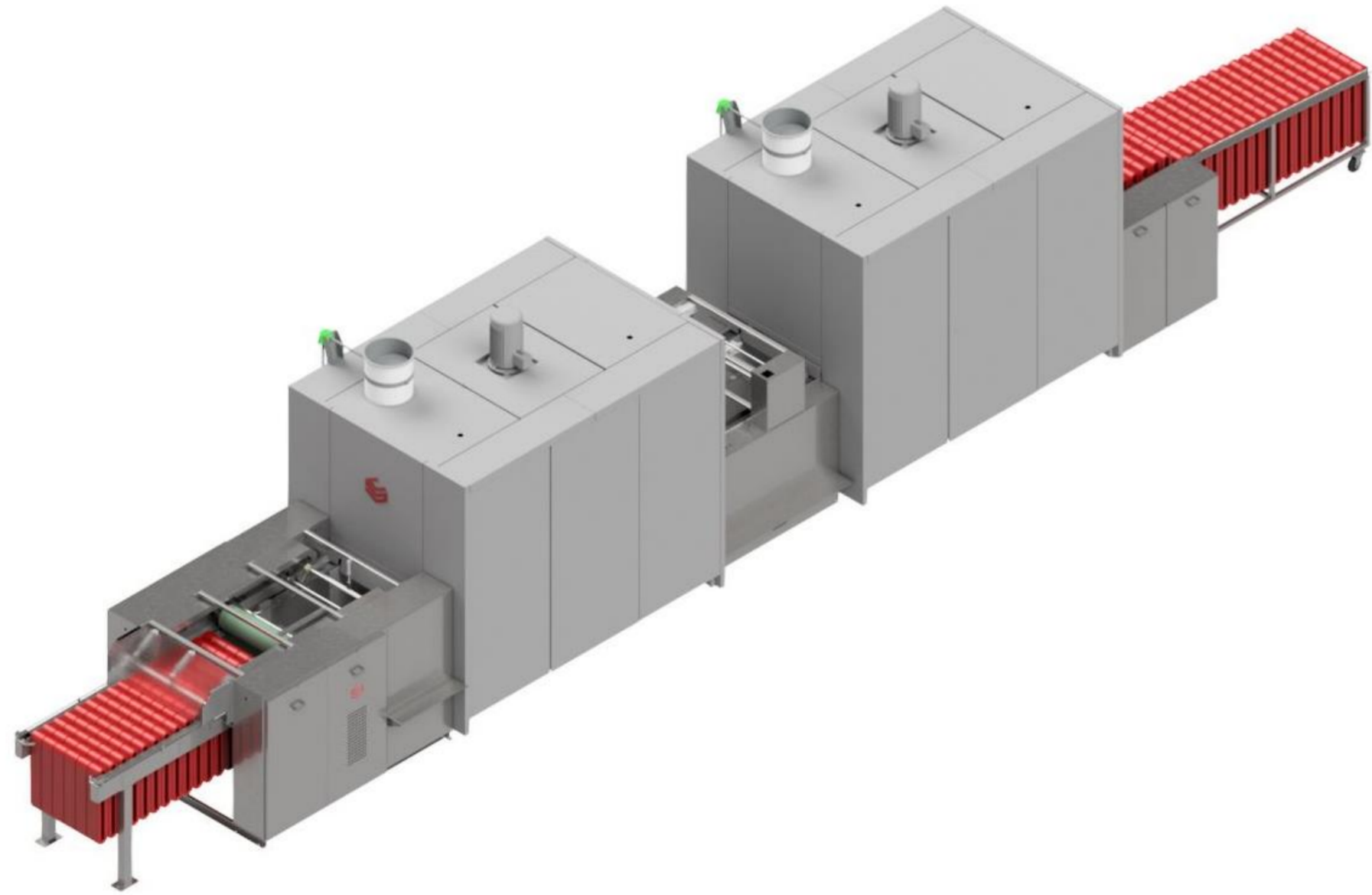


ALEA

BY CUBOTEX

TEXTILE
DRYERS

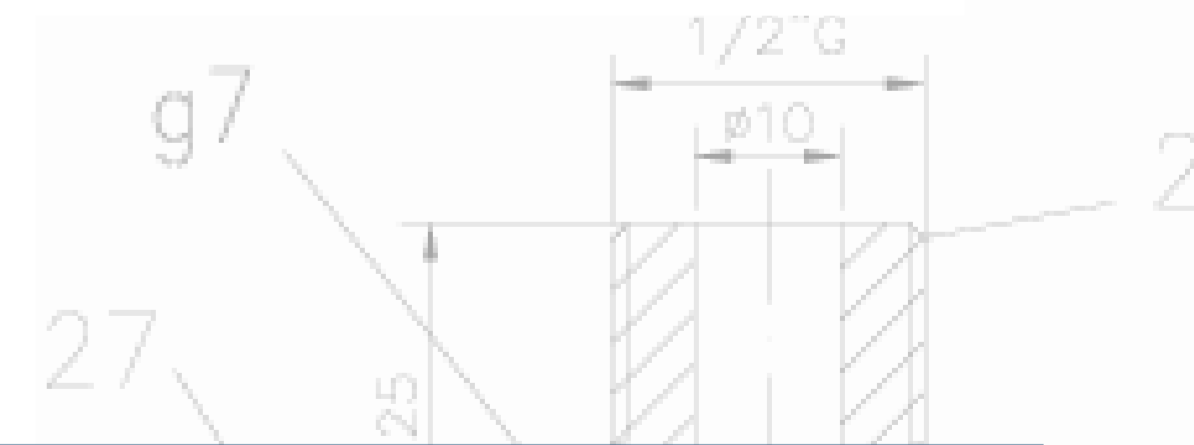
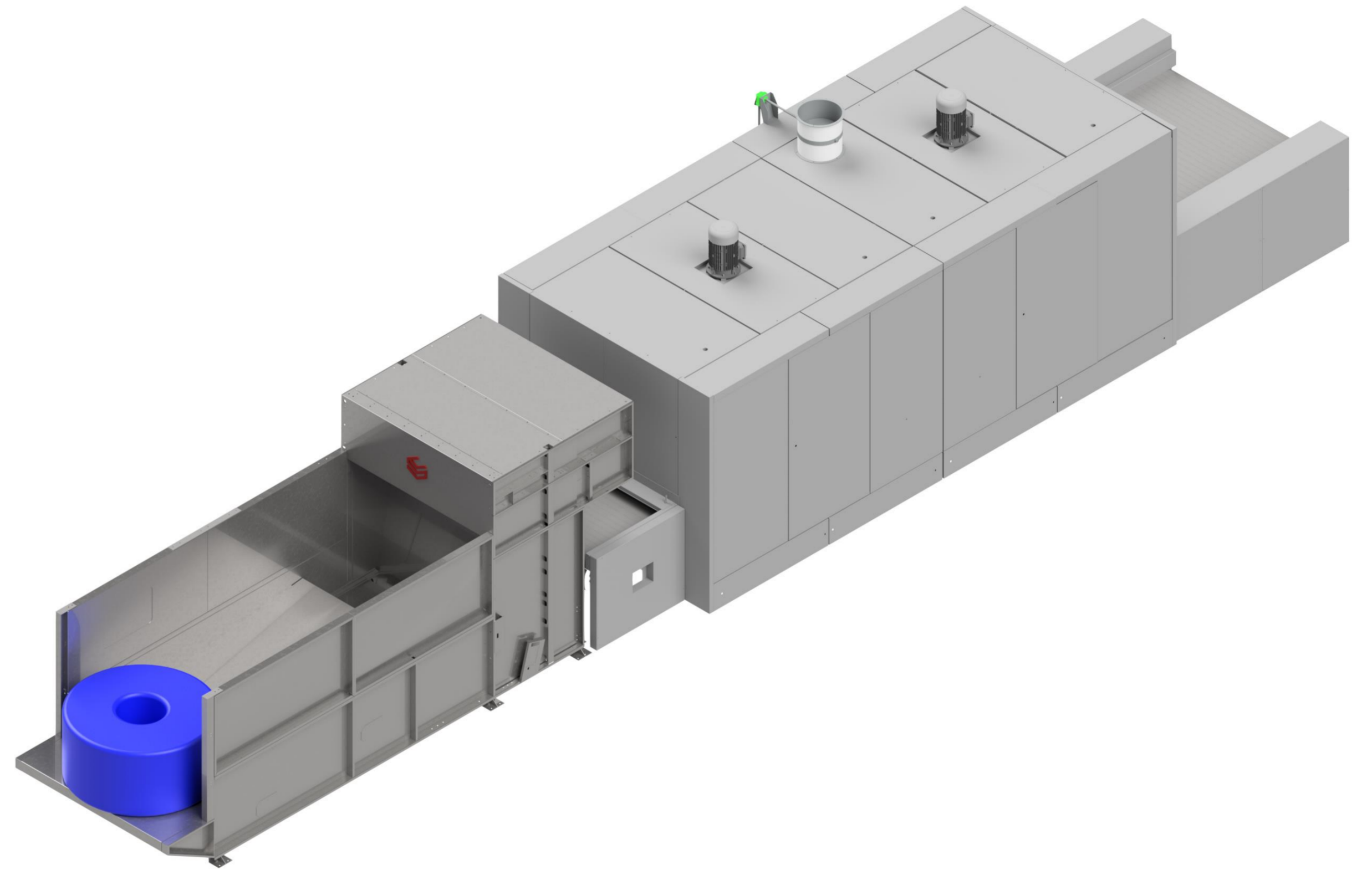
Hank dryers with **automatic squeezer**



ALEA

BY CUBOTEX | TEXTILE DRYERS

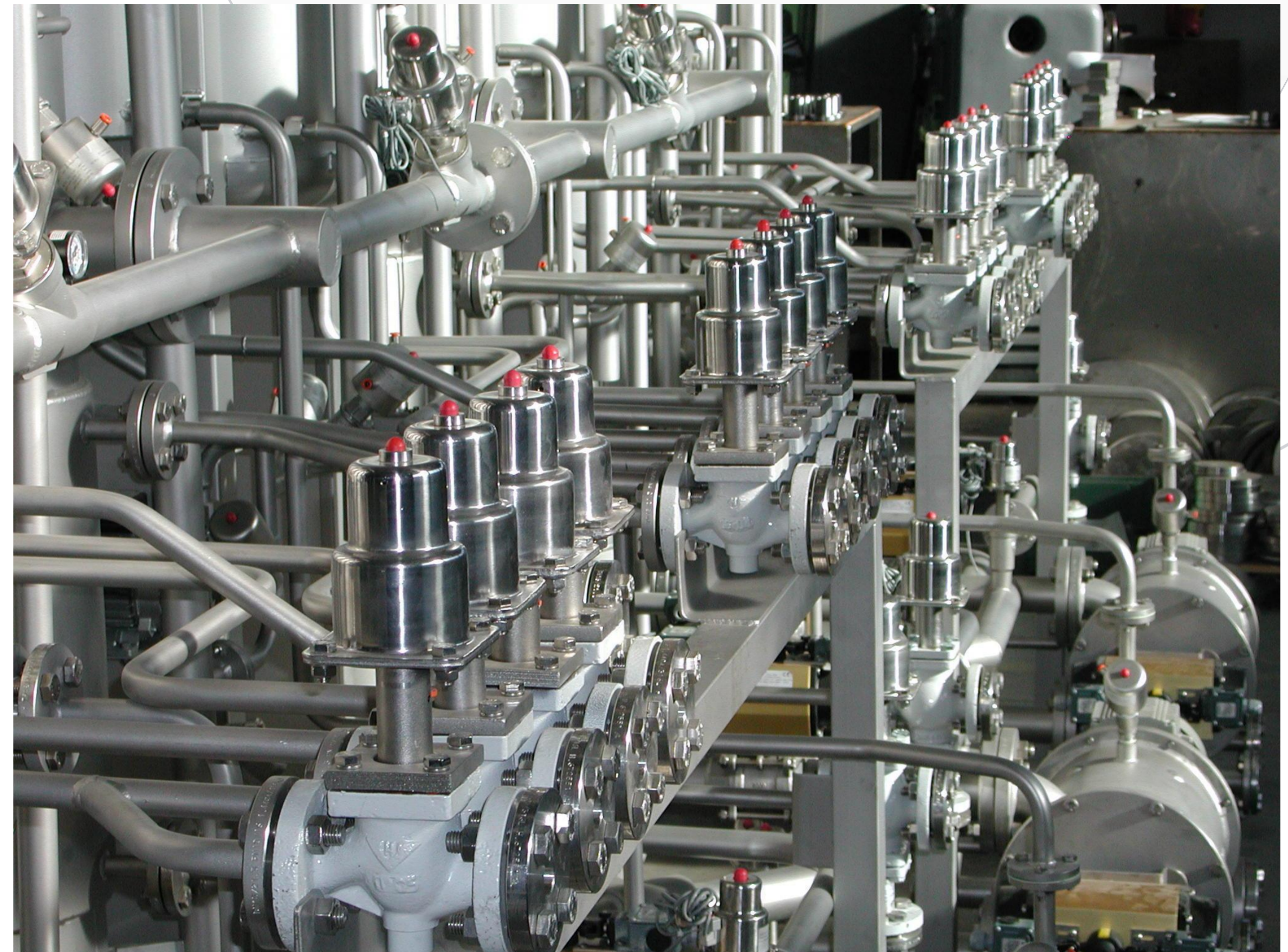
Fibre/tow dryers with automatic cake openers



YARN DYEING MACHINES FEATURES

MAIN COMPONENTS

100% of our suppliers for machines components are from Italy, Germany and Finland.

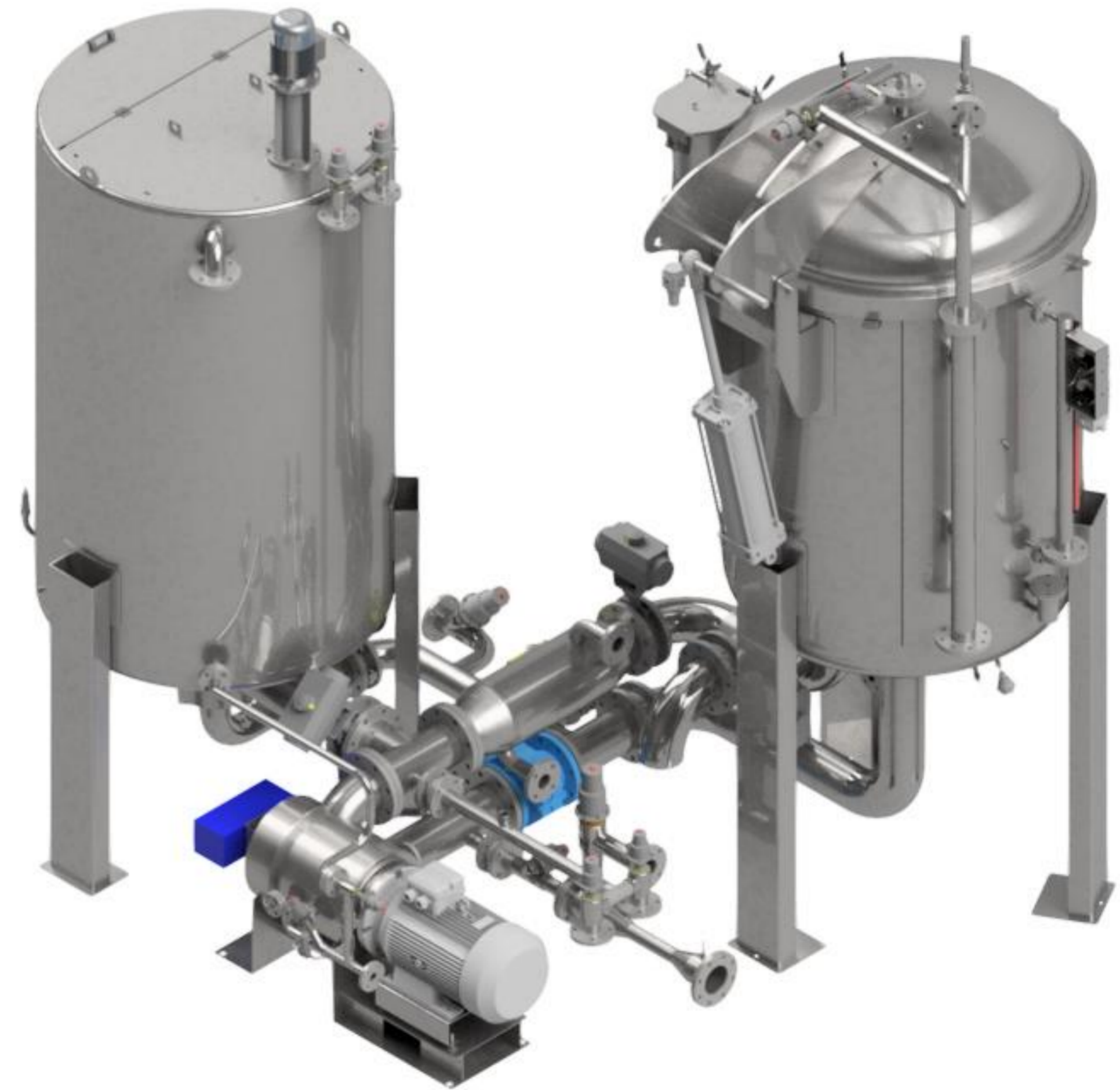


YARN DYEING MACHINES FEATURES

WASHING FEATURES

Different washing functions for water consumption reduction.

The use of water for washing is calculated and totalized in our software separately from the water used for other functions.



YARN DYEING MACHINES FEATURES

NEW CIRCULATION PUMP

Machine capacity: 1.200 Kg

Pump size: DN 300

Average running consumption: 43kWh

Average specific consumption: 0,21 kWh/kg
(reactive cotton dyeing)



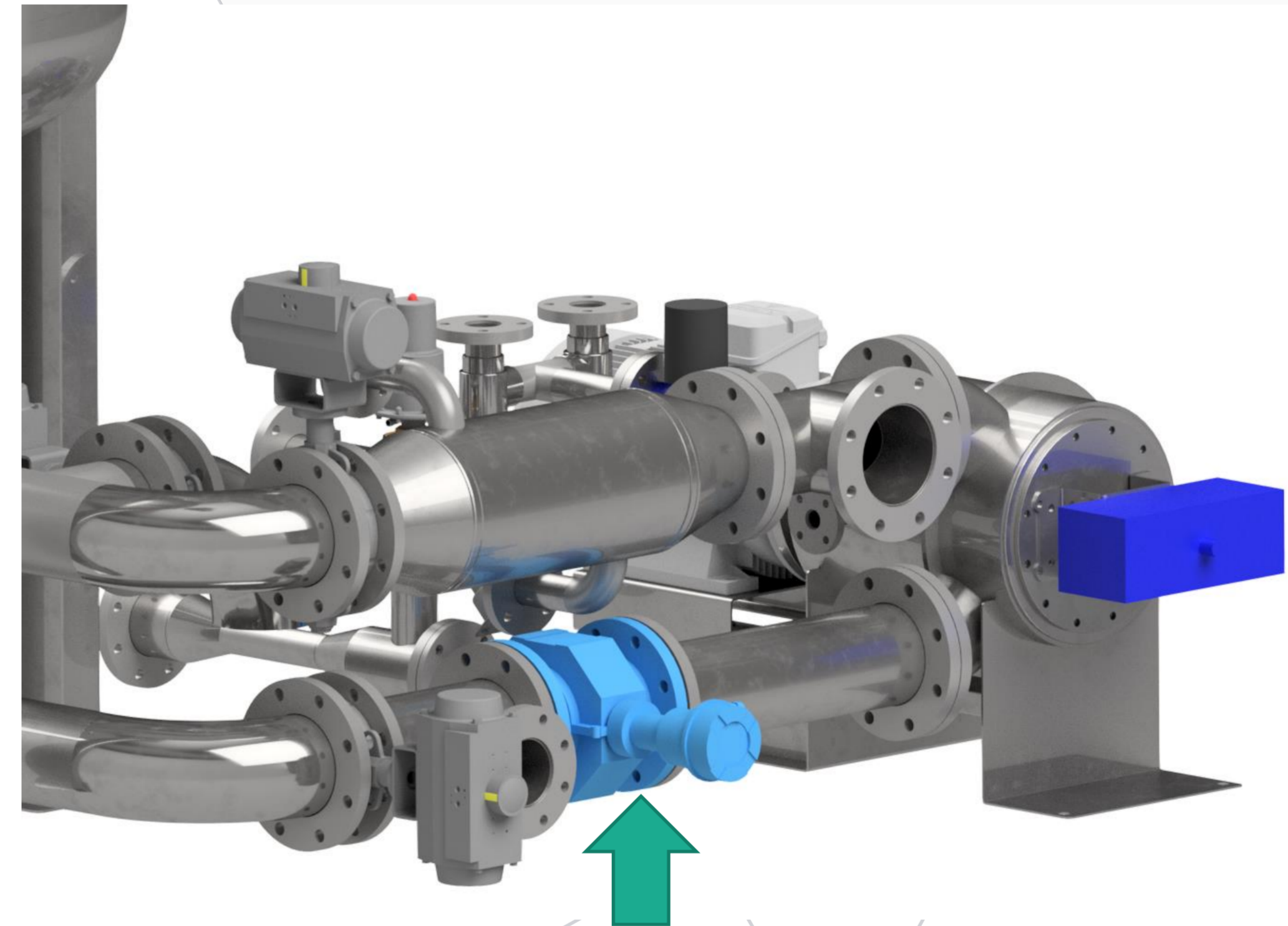
DIRECT PUMP FLOW CONTROL

Specific flow is controlled to grant 100% repeatability

Pump flow can be properly adjusted according to different counts



Higher efficiency in dyeing with less power consumption



YARN DYEING MACHINES FEATURES

HIGH EFFICIENCY HEAT EXCHANGER

Thermal exchange coefficient: 4500 W/(m²K)

Maintenance free

Lower machine liquor ratio

Average heating gradient: 5°C/min

Average cooling gradient: 3°C/min

