

# YARNMASTER® 1N1

Open End Yarn Clearing



# WE HAVE THE QUALITY ...

YARNMASTER®

## 1N1

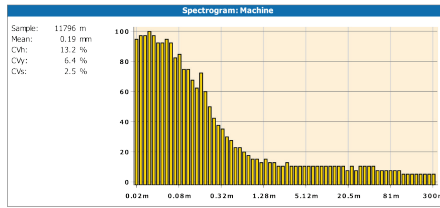
### Optical Precision

Your perfect solution is the 1N1. We provide long-standing and successful experience in optical measuring processes and ensure absolute precision in the detection and elimination of faults that can have negative effects on downstream processing or end products.

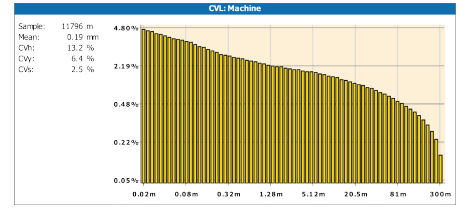
### Your benefits

- Fulfillment of highest demands on yarn quality
- Reliable Quality Control
- Desired quality with maximum possible machine efficiency

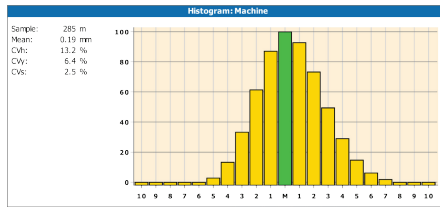




Spectrogram



CVL



Histogram

		Quality: Machine									
		4	10	20	40	80	160	320	mm		
Stopped robots:	2								%		
Sample length:	16832 km										
Average eff.:	99.0 %	4	1	0	0	0	0	0	+200		
Produced:	345.0 kg	30	1	0	0	0	0	0	+160		
Produced Rh:	2068.0 h	668	6	2	0	0	0	0	+120		
Yarn count:	29.1 No	22695	332	7	2	2	0	0	+80		
Speed:	137.0 m/min										
Ref. Mean (mm):	0.19 (260 R)								+40		
Act. Mean (mm):	0.19 (257 R)								+25		
Dust (mm):	0.14 (257 R)								-20		
CV%:	13.1 (260 R)								-40		
IPI Nepps/km:	79 (260 R)	91105	36584	1956	16	3	1	0			
IPI Thicks/km:	74 (260 R)										
IPI Thins/km:	68 (259 R)										
Thicks/100m:	1430 (260 R)										
Thins/100m:	1777 (260 R)										
		Absolute values:		S	L	T	M	V+	V-	Q	Lock
		Values / 1000 Rh:		1	15	5	18				
		Values / 1000 km:		0.5	7.3	2.4	8.7				
		Values / 100 kg:		0.3	4.3	1.4	5.2				

Quality

... YOU HAVE THE GUARANTEE

### User interface

The Graphical User Interface provides comfortable access to all YM 1N1 functionalities and reports.

Interfacing to a wide range of machine types available.

### The online laboratory

100% online quality assurance no longer implies expensive and lengthy laboratory measurements.

### Online Detection:

- Moiré effects
- Yarn count faults
- Sliver faults
- CV% off-standard
- Fault clusters
- Spectrogram analysis
- Defect classification
- Thick and thin places
- Imperfections (IPI)

### Classification of Yarn Faults



Neps



Short



Long



Thin



Piecer



Yarn Count



Irregularity (CV)

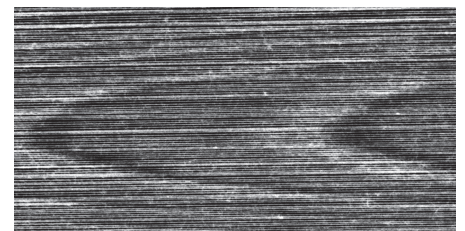
### Accumulation of Yarn Faults



Sporadic faults



Periodic faults



Moiré effect in yarn.



YarnMaster is a registered  
trademark of Loepfe Brothers Ltd.

Loepfe Brothers Ltd.  
8623 Wetzikon / Switzerland  
Phone +41 43 488 11 11  
Fax +41 43 488 11 00  
info@loepfe.com  
www.loepfe.com