

OE-SPINNING



Sehr geehrter
Kunde,

wir möchten
Ihnen bei der
Auswahl unserer
Komponenten
textiltechnologisch
umfassend helfen.

Diese Unterlagen
können das nicht;
das können nur
wir Mit-Arbeiter.

Sprechen Sie mit
uns!

Dear Customer,

We would like to
assist you with the
correct selection
of our
components.

These documents
can only provide
general
information,
so we would be
delighted to work
with you.

Please contact
BROELL for
personalised
service!

Apreciado
Cliente,

Queremos
ayudarle en la
elección correcta
de nuestra
extensa gama de
componentes de
tecnología textil.

Estos documentos
no pueden
hacerlo;
pero nuestros
expertos en
BROELL sí.

No duden en
contactar con
nosotros!

尊敬的客户，

我们非常乐意帮助你
正确选择我们的纺织
机械专件。

这些样本虽不能提供
所有帮助；
但是我们的技术团队
则能提供这种帮助。

请与我们联系。

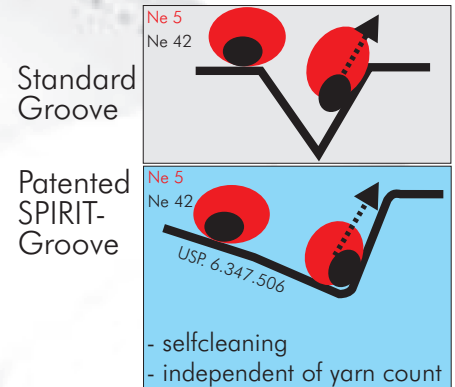


the SPIRIT family



The new generation of Withdrawal Nozzles in OE-Rotorspinning Design & Production: BROELL Name: SPIRIT

designed to improve



Highly Innovative and Unique:
Press-fit system with any type of holder

- maximum heat conductivity
- no more loose ceramic navels

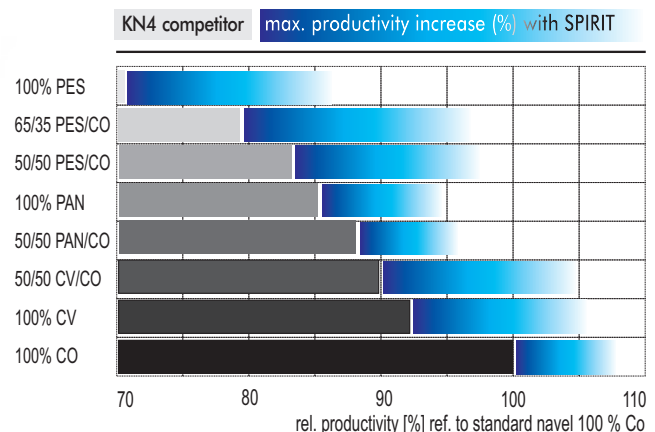
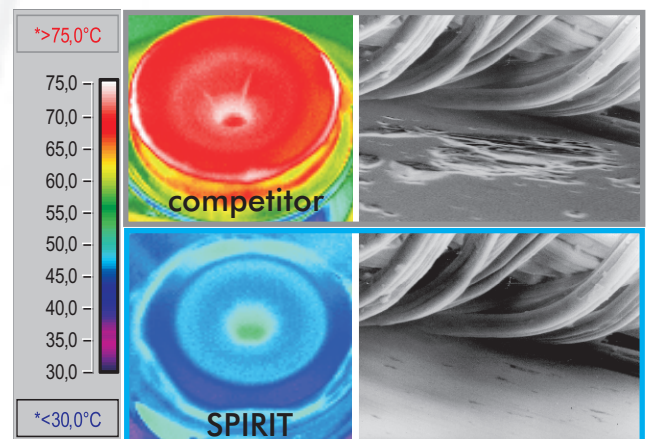
Optimum surface quality for
maximum performance

- maximum service live
- minimum heat generation
- reduced fly and dust generation
- soft as a steel navel to the yarn
- higher rotor speed

New designs for new yarns

- patented asymmetric groove design (no more build-up in the grooves, for very wide range of yarn counts)
- more backtwist ΔT = more real twist
- better knit structure (due to better twist distribution)
- softer hand
- better weaving efficiency (due to less weak places)
- tailored to your needs

use the SPIRIT



more revolutions are our daily business



Navel Selection



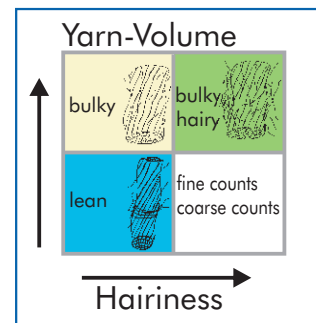
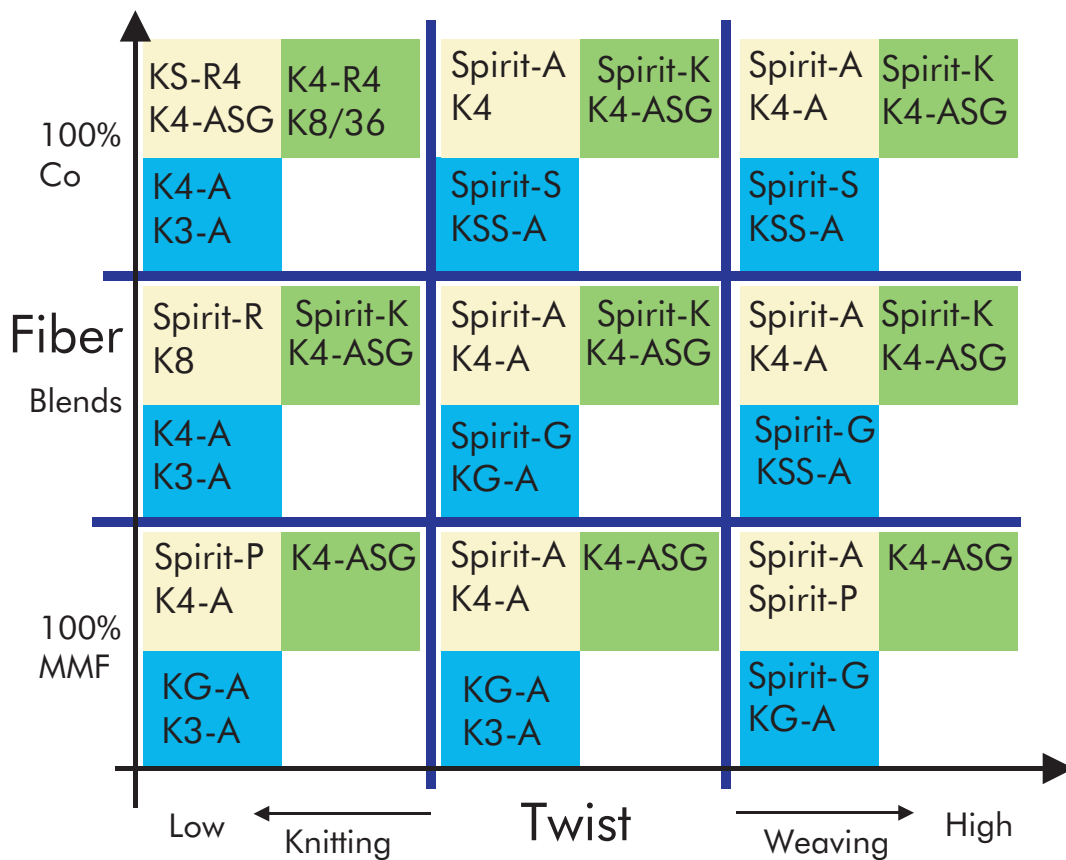
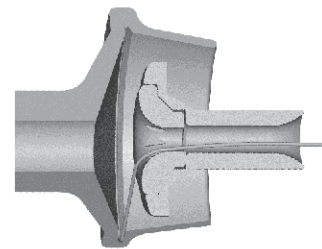
On the basis of extensive and comparative investigations with navels by our company - regardless if they are our own developments of the SPIRIT series or traditional navels (KS, KG, K3, K4, K8, K8/36) - we are now in a position to provide assistance considering both, the aspects of productivity, as well as appearance of the yarn.

The assistance is put on as selection diagram.

Implemented into the diagram is a hairiness - volume diagram.

Within the colored areas, in each case two navel types are indicated: the upper line is more suited for finer yarns, the navel below rather is recommended for coarser yarns.

designed to improve your yarn

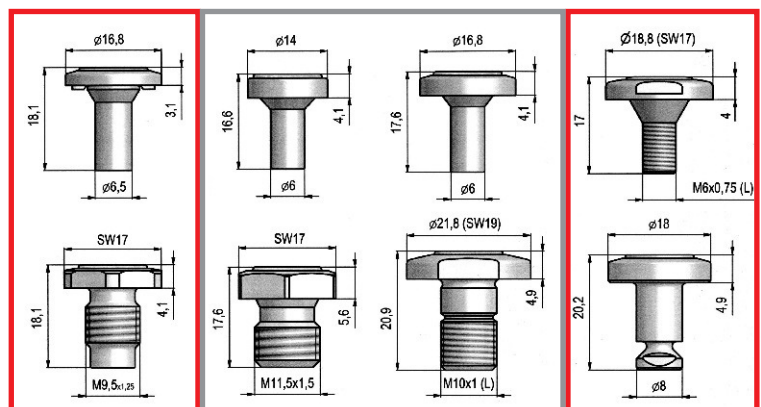


BROELL-navels are suited for increasingly high rotor speeds and are always ahead.

Their precise tuning of geometry and surface permits the apparent contradiction, to spin with reduced twist coefficient if the contact pressure of the yarn on the navel shell and thus the rotor speed or the rotor diameter to be increased at the same time.

This is possible only due to the gentle fiber integration, fiber guidance and insertion of false twist of the SPIRIT navels.

all boxes supported

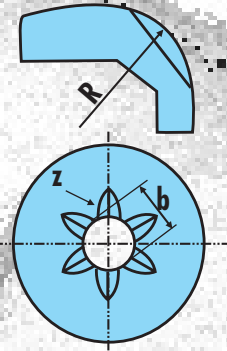


tailor-made products





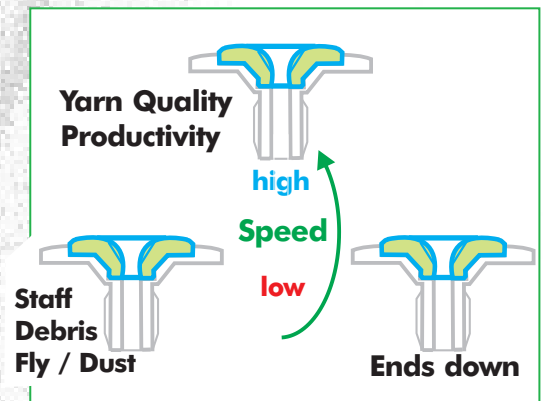
designed to improve



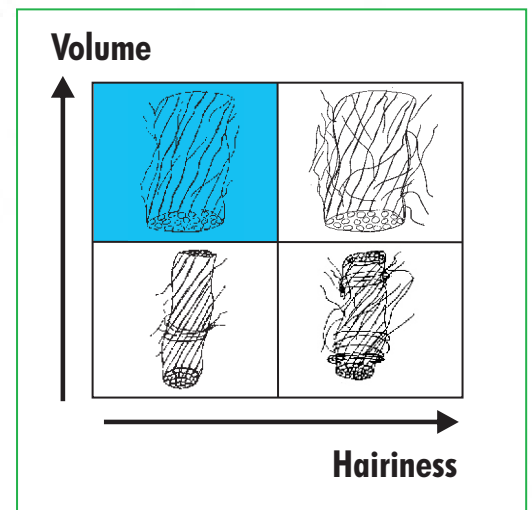
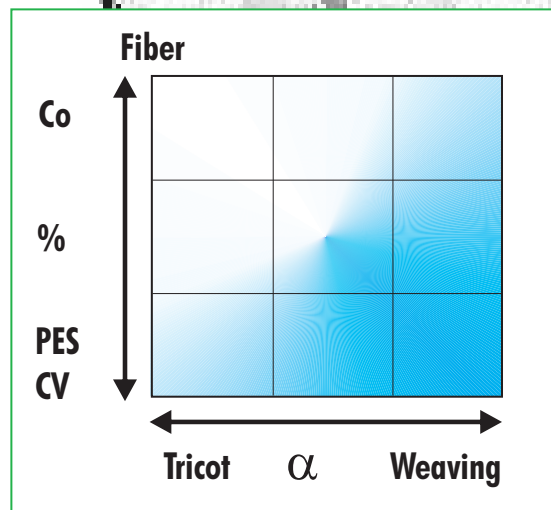
$R = 3.0 \text{ mm}$
 $z = 6$
 $b = 2.5 \text{ mm}$

:Spirit-A

use the SPIRIT



70	40	150.000
40	24	130.000
Nm	Ne	rpm
17	10	70.000
5	3	40.000

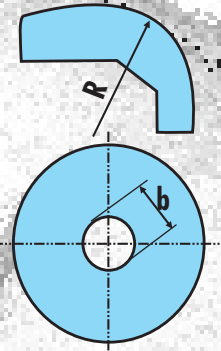


more revolutions are our daily business





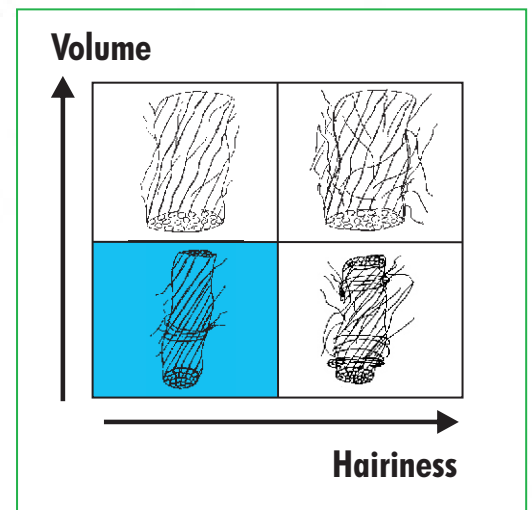
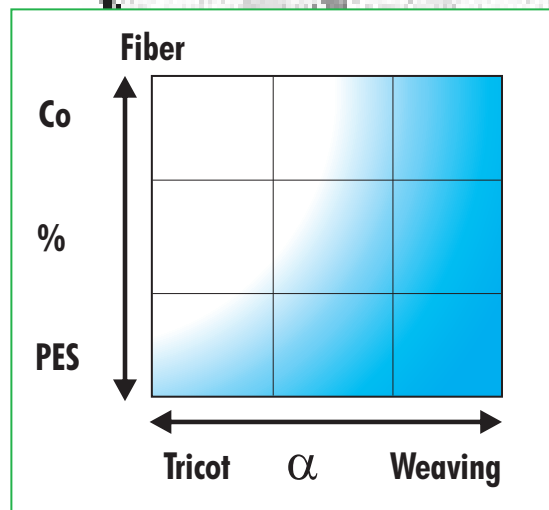
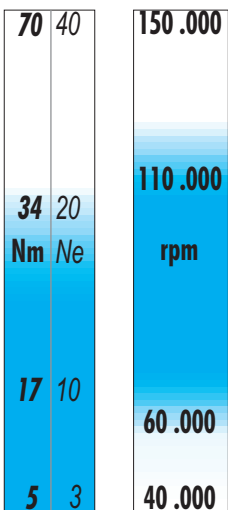
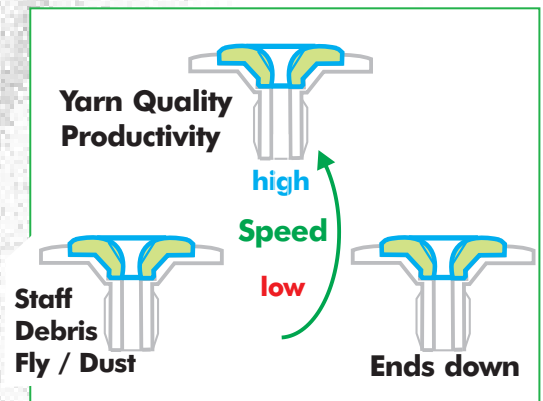
designed to improve



$R = 4.0$ mm
smooth
 $b = 2.5$ mm

:Spirit-G

use the SPIRIT

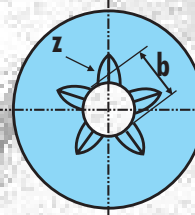
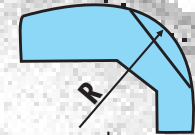


more revolutions are our daily business





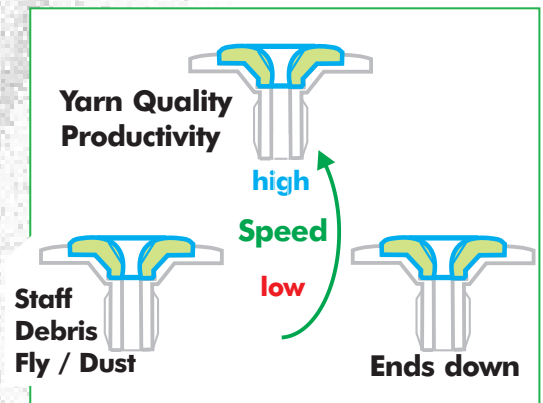
designed to improve



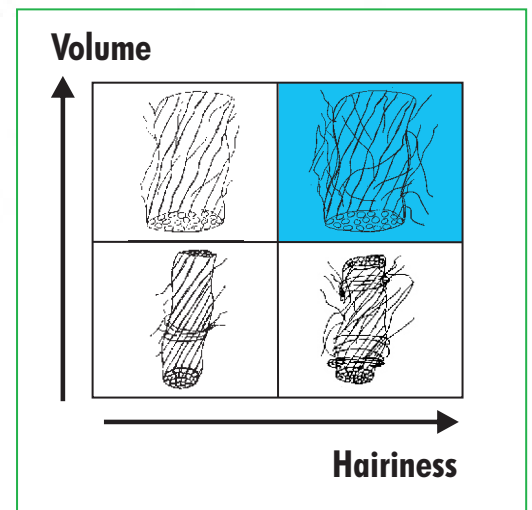
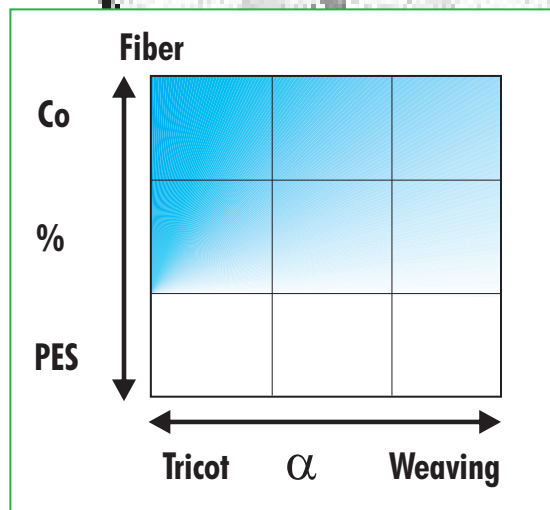
$R = 4.0 \text{ mm}$
 $z = 5$
 $b = 2.9 \text{ mm}$

:Spirit-K

use the SPIRIT



70	40	150.000
40	24	130.000
Nm	Ne	rpm
17	10	70.000
5	3	40.000

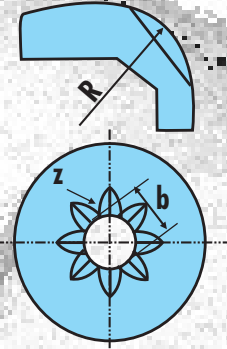


more revolutions are our daily business





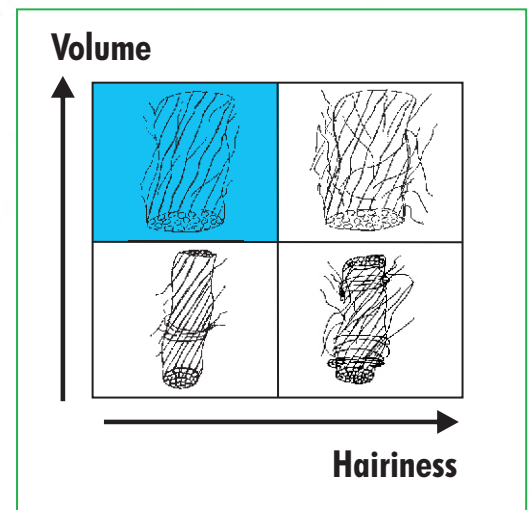
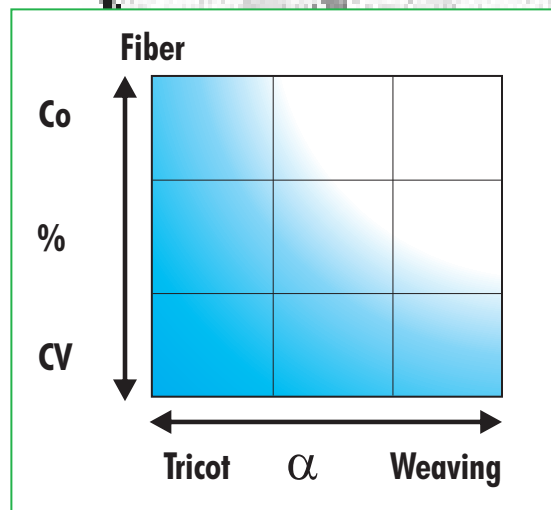
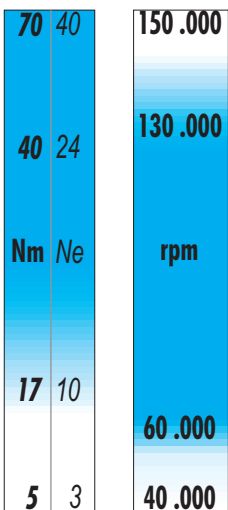
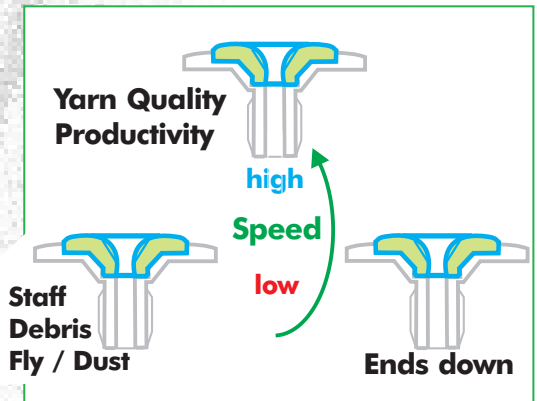
designed to improve



$R = 6.0 \text{ mm}$
 $z = 8 \text{ asym.}$
 $b = 2.0 \text{ mm}$

:Spirit-P

use the SPIRIT

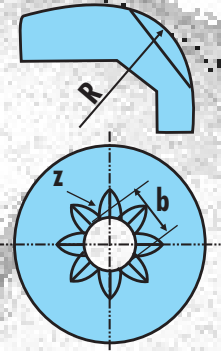


more revolutions are our daily business





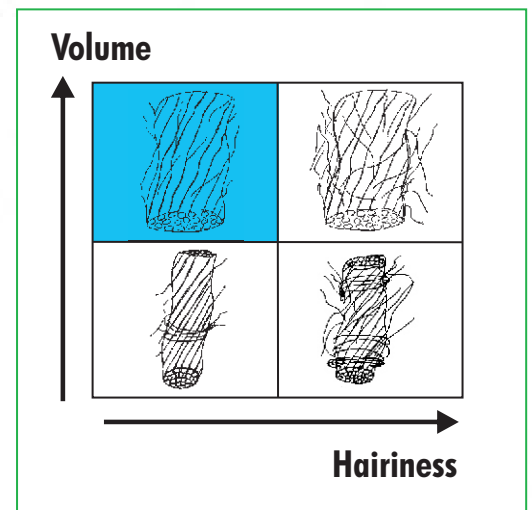
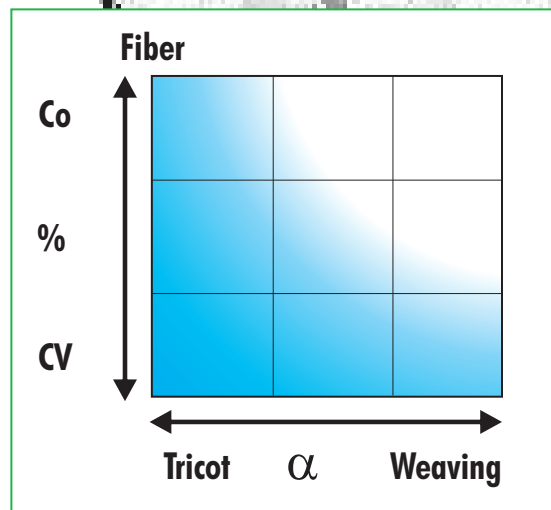
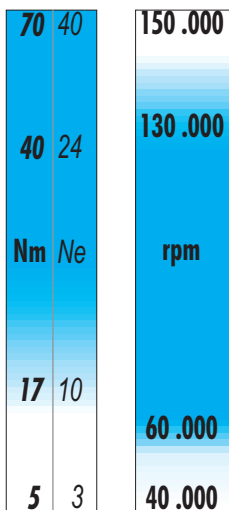
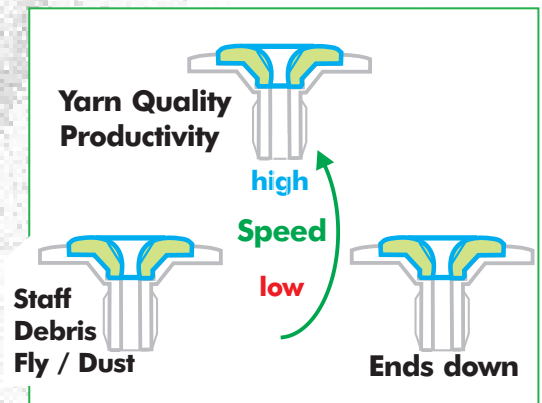
designed to improve



$R = 6.0 \text{ mm}$
 $z = 8 \text{ asym.}$
 $b = 2.0 \text{ mm}$

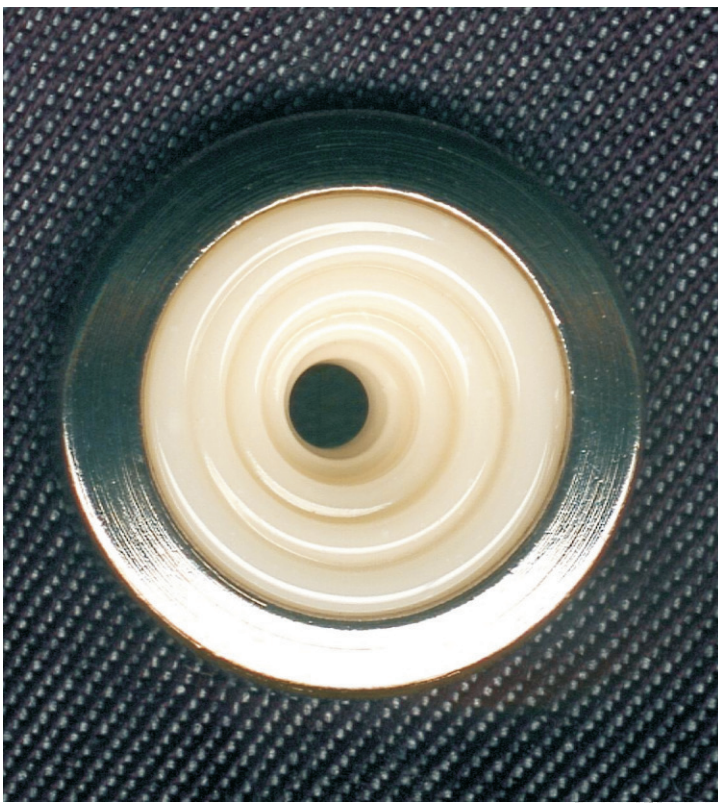
:Spirit-R

use the SPIRIT

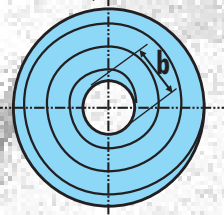


more revolutions are our daily business





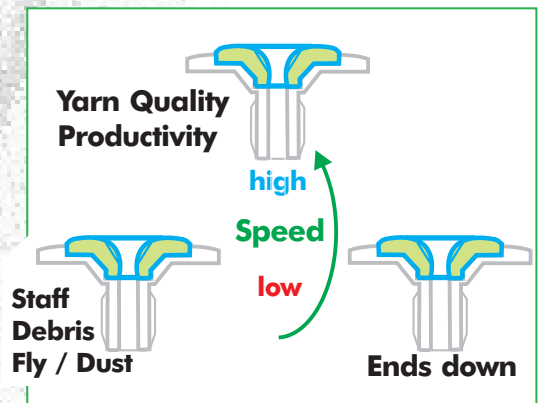
designed to improve



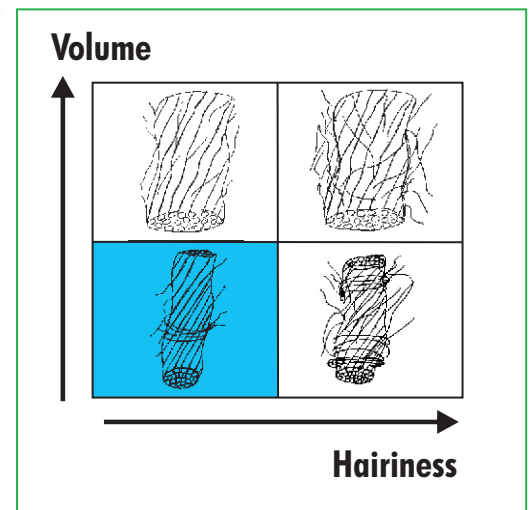
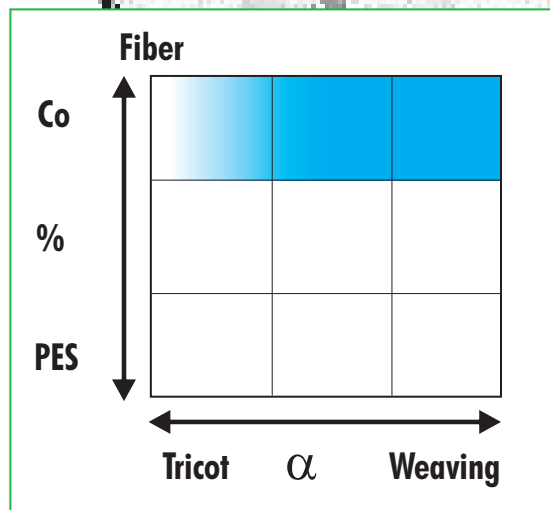
$R = 4.0 \text{ mm}$
Spiral
 $b = 2.5 \text{ mm}$

:Spirit-S

use the SPIRIT



70	40	150.000
61	36	130.000
Nm	Ne	rpm
17	10	70.000
5	3	40.000

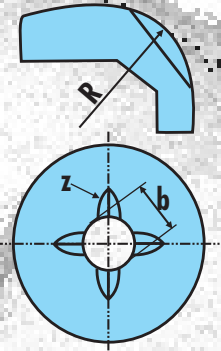


more revolutions are our daily business





designed to improve

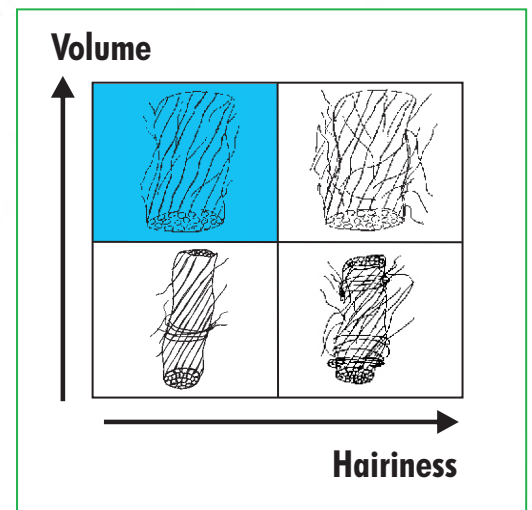
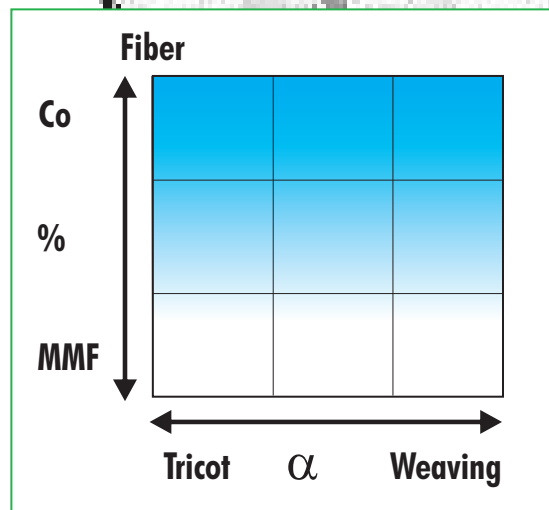
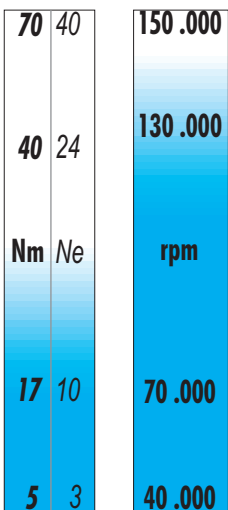
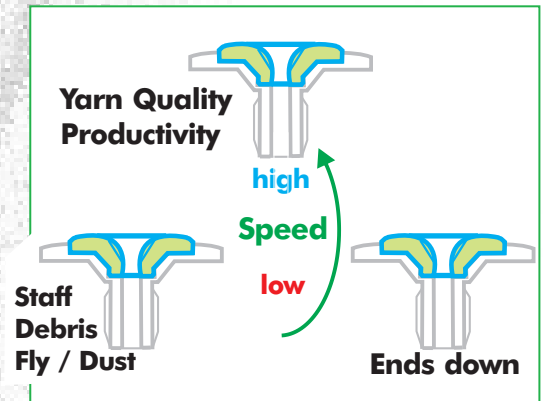


$R = 6.7 \text{ mm}$
 $z = 4 \text{ asym.}$
 $b = 2.5 \text{ mm}$

:K4-ASG

for very coarse yarn
 and very low twist

use the SPIRIT



more revolutions are our daily business

