



R325 N CU2

Leaders in twisting technology since 1869

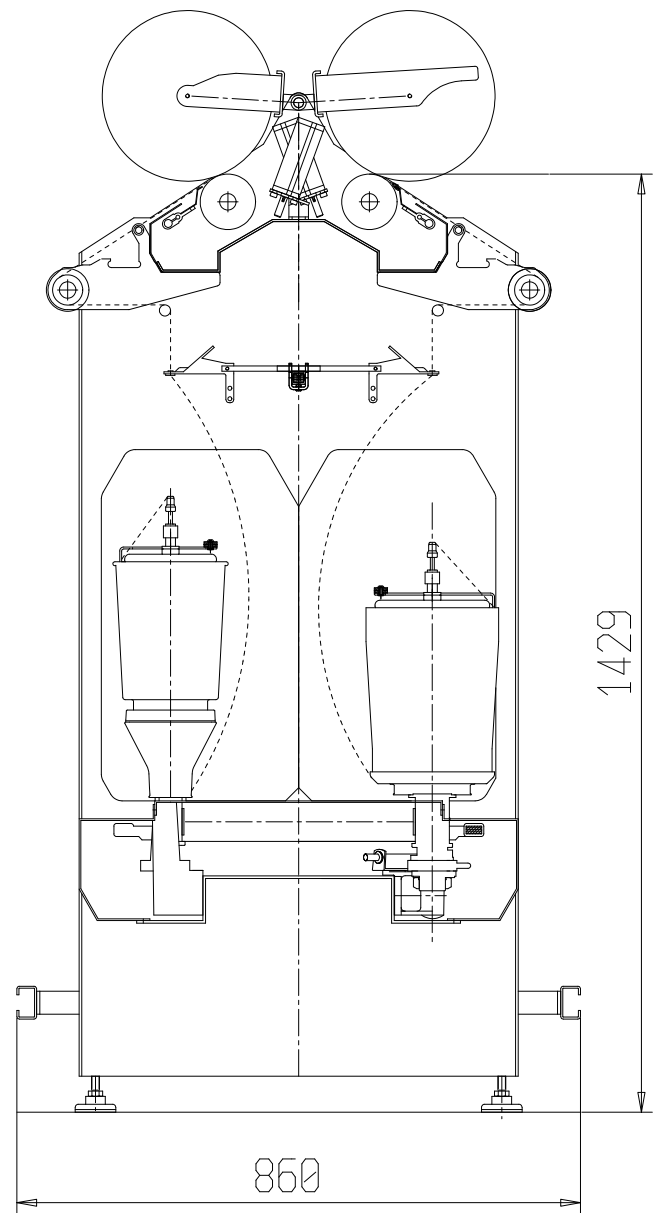
RATTI TWISTING MACHINERY
SEWING THREAD

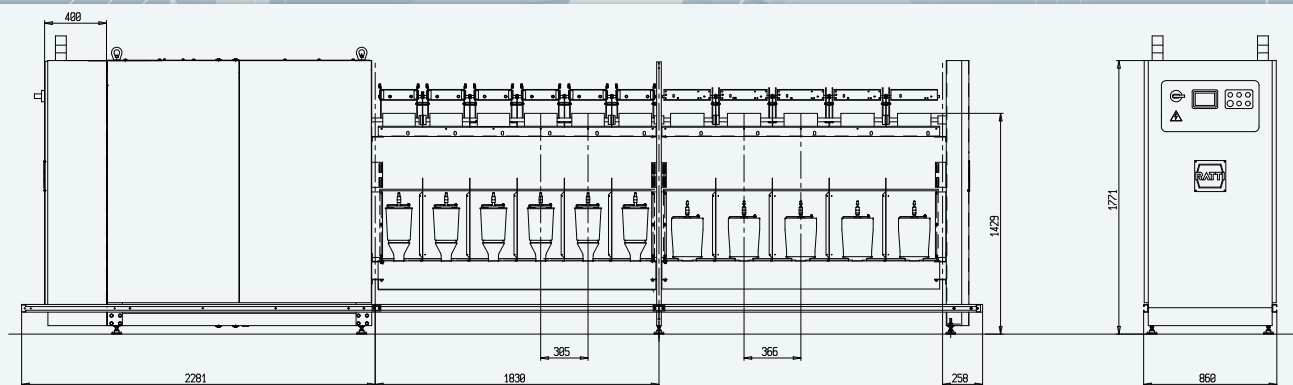


made in *Italy*

TFO TWISTER FOR THE PROCESSING OF SECOND TWIST OF SEWING THREADS

- The assembled yarn, obtained from first step, is now twisted, in the opposite direction of the single ends of which it is made.
- The machine is equipped with the spindles type DT140N for the 1,5 kg (3lb.) flanged bobbin with a 305 mm gauge and, type NT180 for the 3 kg (6lb.) flanged bobbin with a 366 mm gauge.
- An aluminum basket avoids interference between the balloon and the supply package during the start-up.
- A rotating flyer helps the unwinding of the yarn from the flanged bobbin and avoids yarn breaks.
- Spindles mounted on swing arm in oil bath for easy intervention on the single position.
- Sintered ceramic overfeeder protected with a plastic cover to prevent the accumulation of yarn.
- Adjustable yarn-guide roller around the overfeeder for fine take-up tension adjustment.
- Inverterised spindles driving motor.
- In case of yarn breaks, a pneumatic system lifts up the take-up bobbin and the yarn guard stops the yarn supply.
- Gearbox for the winding of biconical packages with lip motion system for softer edges.
- All machine controls – spindles speed and overfeeder, TPM setting – located in a single head stock.
- Touch screen control panel for the monitoring of: spindles speed, take-up speed, yarn meter counter, working hours, “S” and “Z” twist.
- Automatic transfer tail device.
- The machine is built according to the last CE standards for quality and security.





Number of sections	1	2	3	4	5	6	7	8	9	10	11	12
Number of spindles	12/10	24/20	36/30	48/40	60/50	72/60	84/70	96/80	108/90	120/100	132/110	144/120
Machine length (mm)	4369	6199	8029	9859	11689	13519	15349	17179	19009	20839	22669	24499

TECHNICAL DATA

FLANGED BOBBIN

1,5 KG

3 KG

SPINDLES

Spindle type	DT140N	NT180N	
Gauge	305	366	mm
Spindles per section	12	10	nr
Max. no of spindles	144	120	nr
Max. technological speed	12.000	9.000	rpm
Twist range	60-2778	60-1870	TPM
Count range	50-1000	150-1000	Dtex
Type of supply package	Flanged bobbin		
Supply package max. diameter	140	175	mm
Supply package max. length	200		mm

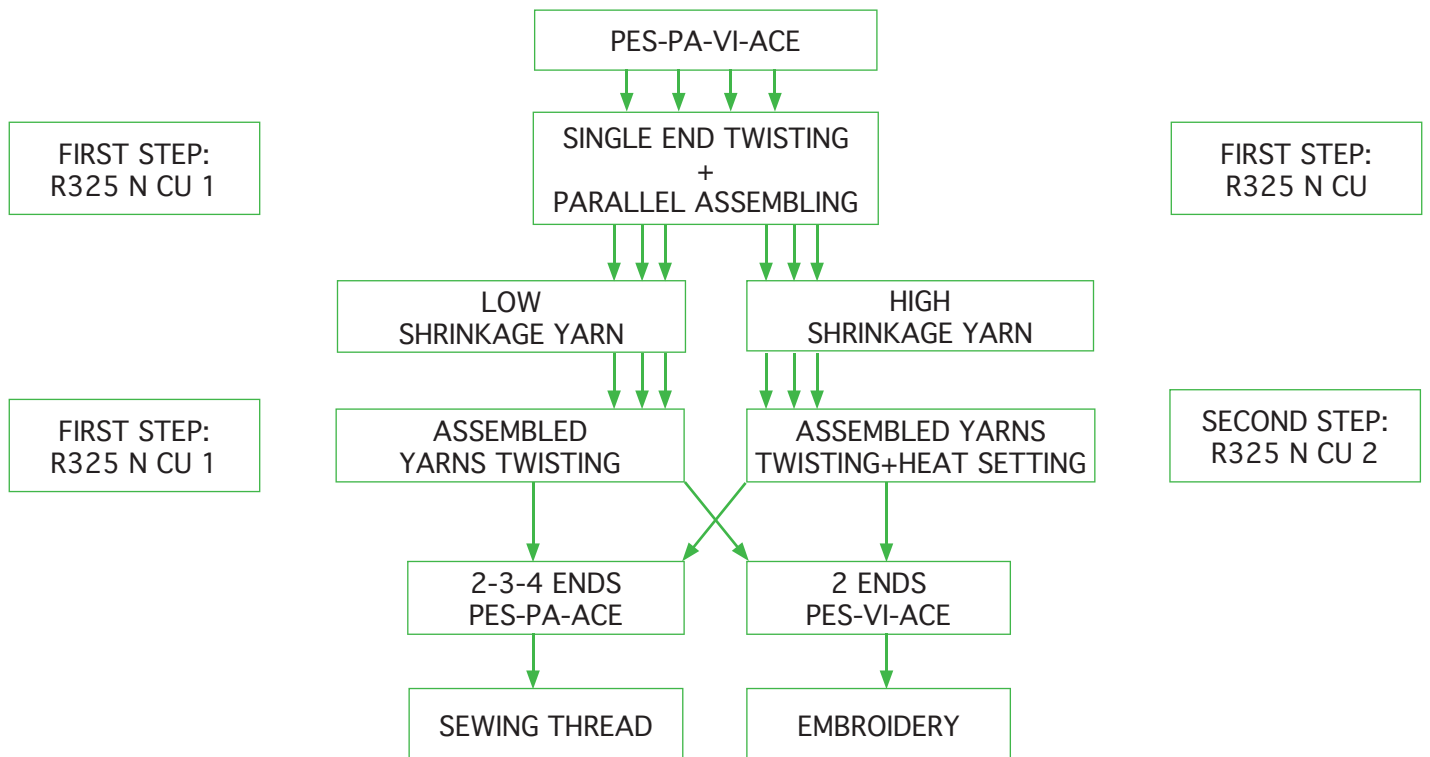
TAKE-UP

Take-up per section	12	10	nr
Max. number of take-up	144	120	nr
Gear box	UDR		
Type of package	biconical bobbin		
Max. diameter	250		mm
Traverse	200	200/250	mm
Tube dimensions	56x230	56x230/69X290	mm
Max. technological speed	170		m/min

FRAME

Max. number of sections	12	nr
Section length	1830	mm
Machine width	860	mm
Max. machine length	24499	mm
Machine height	1756	mm
Height at take-up	1429	mm
Max. installed motor	22	kW
Weight max approx.	4750	kg

FLOW CHART OF SEWING THREADS PROCESS FOR SINGLE YARN FROM 33 TO 560 DTEX



OPTIONALS

DEVICE FOR PROCESSING COUNTS HIGHER THAN 560 AND LOWER THAN 1000 DTEX

SOFT WINDING FOR DIRECT DYEING

PNEUMATIC SPINDLES DISENGAGEMENT (ONLY WITH SPINDLE NT180N)

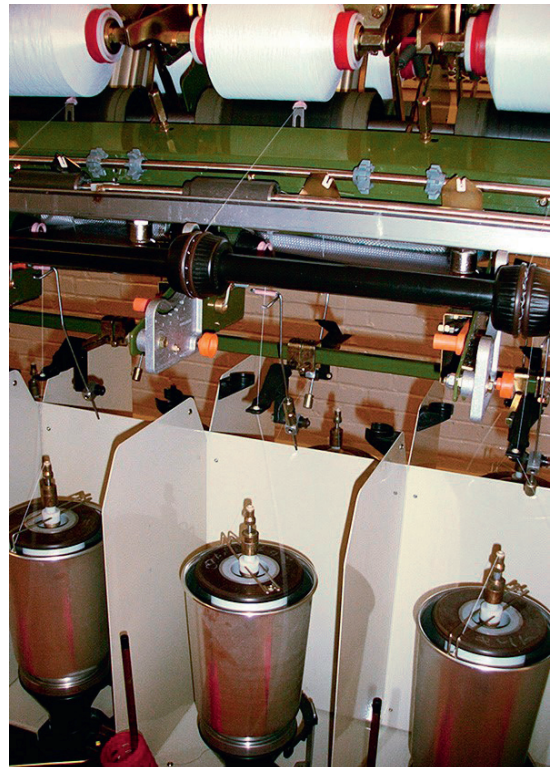
ELECTRONIC SETTING OF THE TPM LEVEL

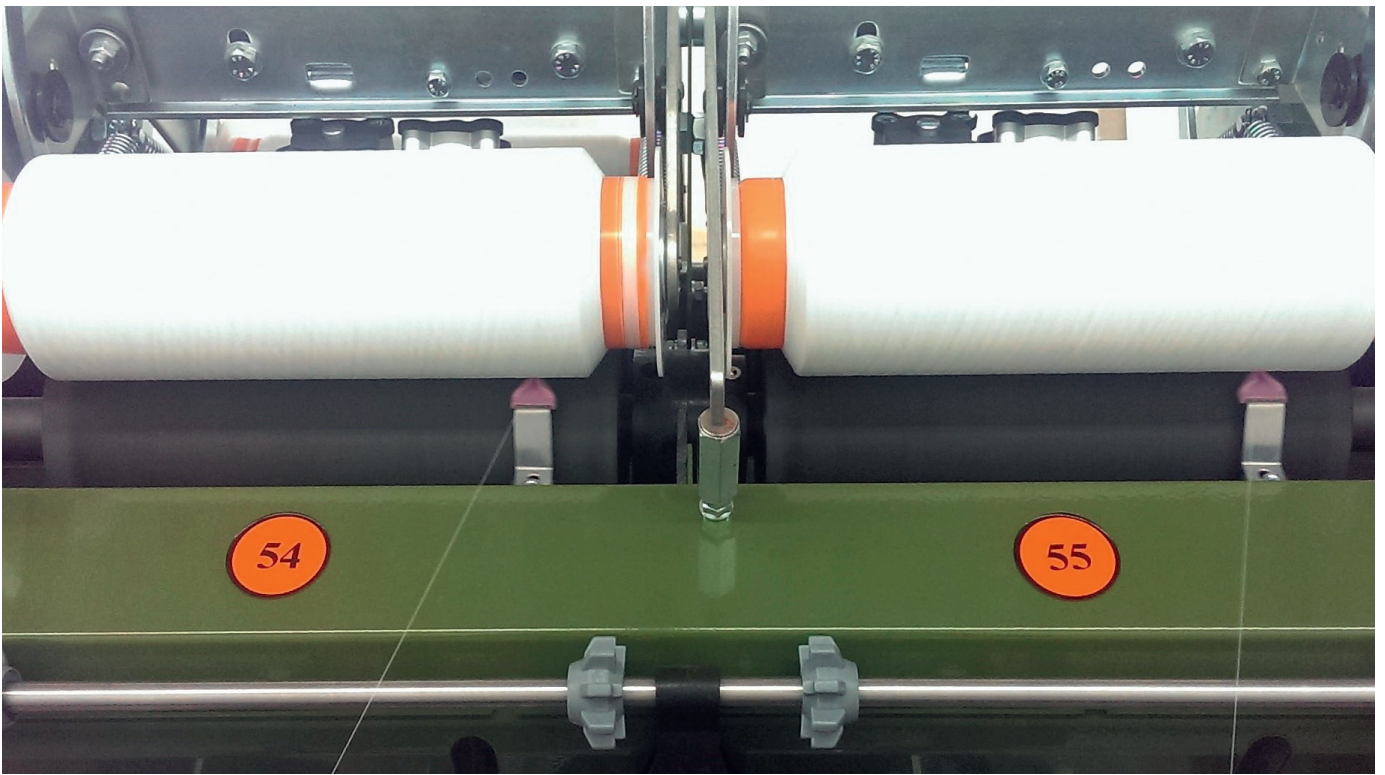
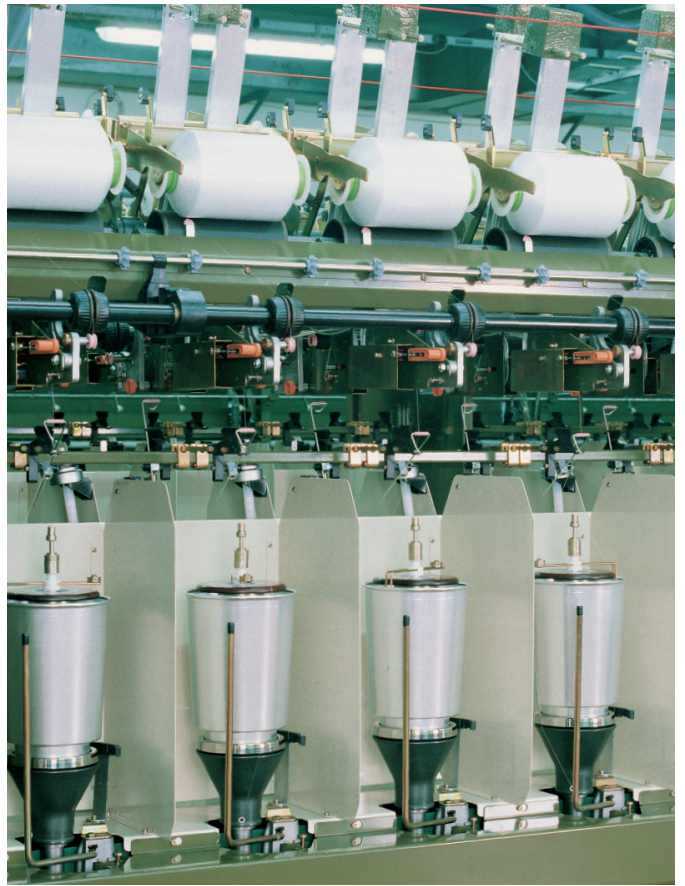
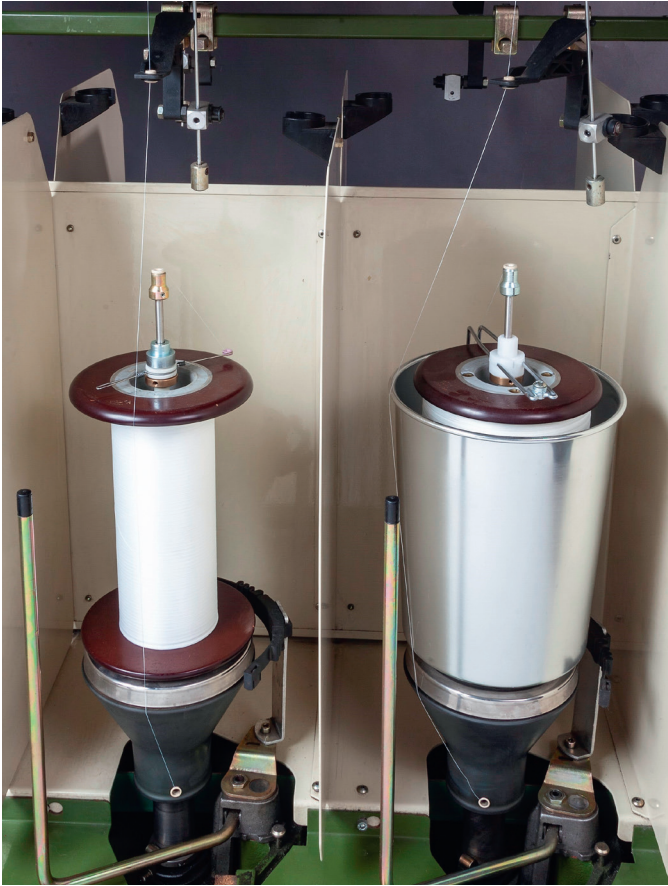
INVERTERISED OVERFEEDER DRIVING

REMOTE ASSISTANCE

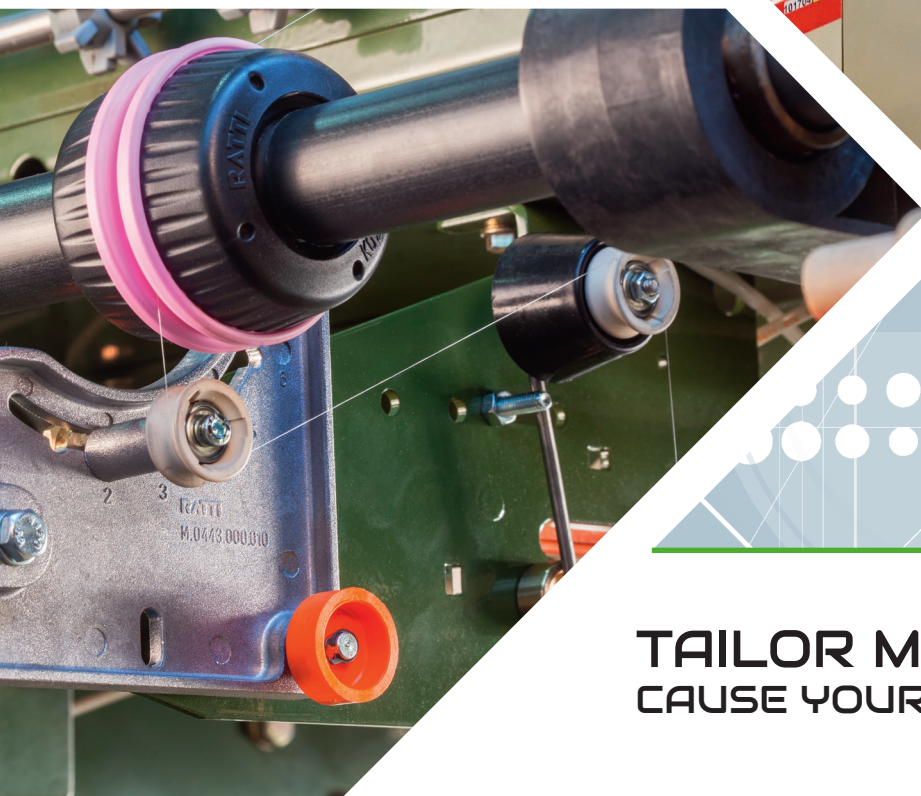
MACHINE LINKING TO COMPANY NETWORK

POSSIBILITY TO PERSONALISE THE MACHINE, ACCORDING TO THE CUSTOMER REQUIREMENTS





The data and images contained in this catalogue are indicative. The company reserves the right of making any modifications of technical-construction type without previous notice.



**TAILOR MADE MACHINES
CAUSE YOUR NEEDS IS OUR JOB!**



RATTI Luino S.r.l.

Via Provinciale, 309 - 21030 Cassano Valcuvia (VA) - Italy
Phone: +39 0332 538.411 - Fax +39 0332 530.988
info@rattiluino.com - www.rattiluino.com

