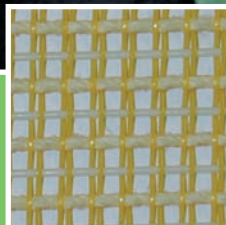
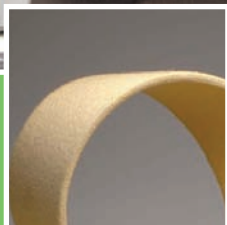
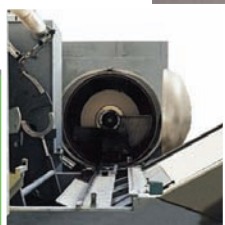


# Woollen Fabrics finishing



- Optimal stability
- Excellent fabric handle

**DOZZFUS MULLER**  
TECHNOLOGY FOR FASHION

# Spare parts for decatizing machines

Our high quality products are specially recommended for the following decatizing machines : BIELLA SHRUNK PROCESS, SPEROTTO RIMAR, M-TEC (MENSCHNER, HEMMER), T.M.T., BISIO, GESSNER, MOERS, SINGER,...






## DISCONTINUOUS DECATIZING MACHINES

Description	Quality	Characteristics				
		Composition (Wa: Warp / We: Weft)	Number of Picks / cm	Width (in cm)	Weight (g/m <sup>2</sup> )	Air Flow (CFM : Cubic Feet / min, under 124 Pa)
High quality of Satin Wrapper	DN 3000	Wa : Polyester / Cotton (65%/35%) We : Cotton / Polyamide (75%/25%)	132 ± 2	177	420	6
Quality Satin wrapper	DN 395	Wa : Cotton / Polyamide (70%/30%) We : Cotton / Polyamide (75%/25%)	115 ± 2	177	390	9
High quality molleton	K 5	Wa : Cotton / Polyamide (75%/25%) We : Cotton (100%)	34 ± 2	176	550	11
Steam resistant needle punched molleton underlayer	HZ 40	100% Nomex® fibres	-	180	390	62

## CONTINUOUS DECATIZING MACHINES

Machines	Description	Quality	Characteristics			
			Composition	Thickness (in mm)	Weight (g/m <sup>2</sup> )	Air flow (CFM : Cubic Feet/min, under 124Pa)
Sperotto Multidecat / Superfinish	Endless transport felt	FINROLL	100% Polyester	4	2200	7
Sperotto Multidecat / Biella Thermoduplex / Superfinish	Heat shrinkable sleeve 8 mm thickness	MTR 8		8	2800	10
	Heat shrinkable sleeve 4 mm thickness	MTR 4		4	1300	14
Old machines	Steam resistant needle punched molleton with non marking chamfered edges	D fix N	100% Nomex® fibres	2.5	300	100
	Woven underlayer cloth	39/1	100% Acrylic	0.6	220	45

## CONVEYOR BELTS

Machine types	Belt types	Description	Recommended belts		Characteristics			
			Insight	Quality	Composition	Maximum working T°	Air Flow (CFM : under 124 Pa)	Steam resistance
Steaming machines	RIGID	Smooth surface		TAMIP GT 40	Fibreglass coated with Teflon®	260°C 500°F	1900	-
	FLEXIBLE	Ideal belt for transportation		TAMIP C 928	100% Polyester	150°C 300°F	1400	++
		Smooth surface and limited dimensional stability		TAMIP C 900			1570	++
		Reinforced spiraled belt. Very high stability		TAMIP Multiclip 80			1100	++
Decatizing machine exit belt	FLEXIBLE	High grip surface recommended for inclined exit		TAMIP C 928	100% Polyester	150°C 300°F	1400	++

- none ++ strong

Teflon® and Nomex® are Dupont de Nemours registered trade marks. The contents of this catalogue is subject to change at any moment.

## SLEEVE FOR VIGOUREUX PRINTING

Description	Quality	Characteristics			
		Composition	Maximum working T°	Thickness (in mm)	Weight (g/m <sup>2</sup> )
Felted woven sleeve	Q1 G1	100% Wool	130°C / 270°F	6	2500