



R441 STR

Leaders in twisting technology since 1869

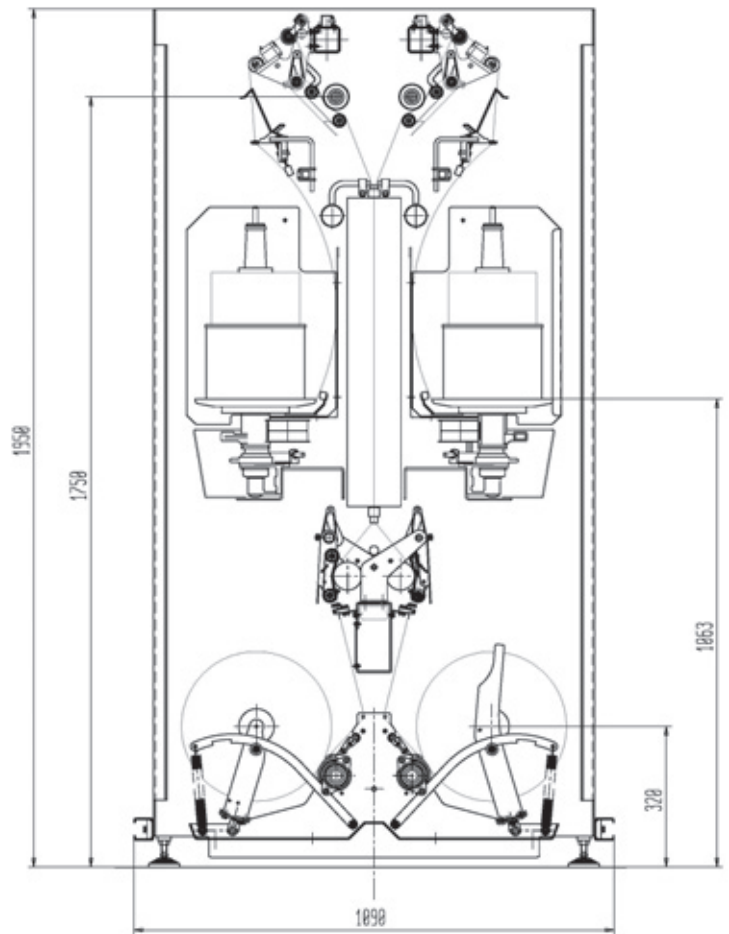
RATTI TWISTING MACHINERY  
STRETCH YARN



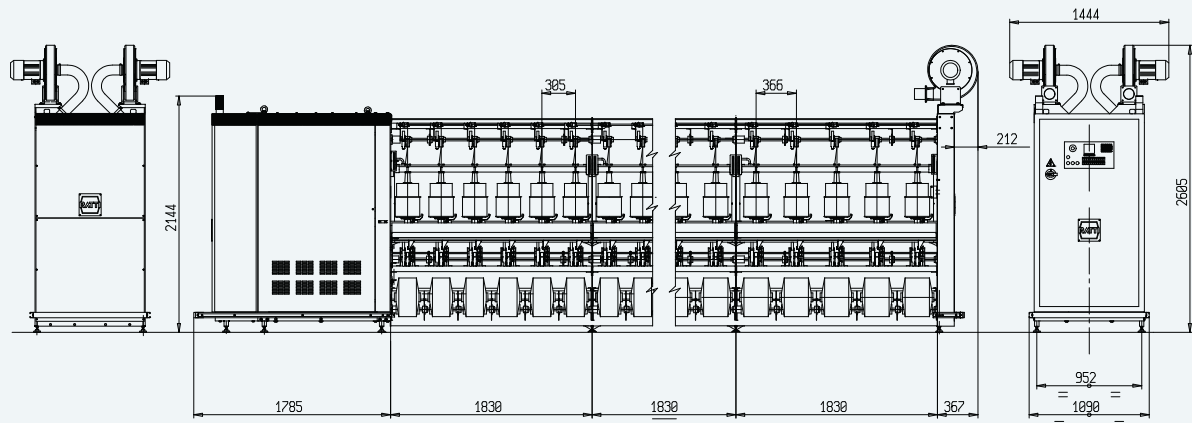
made in *Italy*

## TWO-FOR-ONE TWISTER FOR STRETCH YARN

- The R 441 STR machine is designed for continuous twisting / stabilizing of polyamide and polyester stretch yarns wound on very soft cheese and muff packages for direct dyeing.
- The continuous twisting and stabilizing for the stretch yarn to be dyed is of particular interest due to the lower cost and waste, greater uniformity and fewer operations than the “cheese dyeing + twisting process”.
- The downward yarn path inside the heater and the “gravity compensation” type take-up cradle will produce take-up packages of large diameters up to mm. 350, with the highest possible softness, lowest density and uniformity for top quality yarn dyeing.
- This machine can be equipped with spindles type NT 220 and NT 260 (Ø).
- The range of shrinkage (\*) inside the heater goes from 15% to 65%, allowing the following effects:
  - Increasing yarn softness.
  - Increasing yarn bulkiness
  - Setting and stabilizing yarn elasticity
  - Increasing of final count



(\*) in accordance to the texturizing process features



Number of sections	1	2	3	4	5	6	7	8	9	10
Number of spindles	12/10	24/20	36/30	48/40	60/50	72/60	84/70	96/80	108/90	120/100
Machine length (mm)	3982	5812	7642	9472	11302	13132	14962	16792	18622	20452

## TECHNICAL DATA

### SPINDLES

Model	NT 220	NT 260	
Spindles per section	12	10	
Max. no of spindles	120	100	
Max technological speed	8.500	7.500	rpm
Spindle gauge	305	366	mm
Spindle whorl diameter	52	64	mm
Twist range (electronic control)	80-800	80-800	TPM
Count range	33x2 > 334x2	44x2 > 334x2	Dtex
Type of supply package	Textured bobbin	Textured bobbin	
Supply package max. diameter	210	250	mm
Supply package max. length	290	290	mm
Supply package weight	3.000	5.000	grs

### HEATERS

Max number of heaters	10	10	
Heater length	700	700	mm
Shrinkage inside heaters	15% - 65%	15% - 65%	
Temperature range	50 C° - 250 C°	50 C° - 250 C°	C°
Max installed power	10,8	9	kW
Average consumption	5,9	4,9	kW

### TAKE UP

Number of decks	1	1	
Gear box	UD	UD	
Traverse max	200	250	mm
Diameter max	350	350	mm
Tube dimensions (Diameter x Length)	56 x 230 - 69 x 230	56 x 290 - 69 X 290	mm
Max. take-up speed (on first shaft)	200	200	m/min
Draft at take-up	0,5% - 35%	0,5% - 35%	

### FRAME

Max number of sections	10	10	
Section length	1.830	1.830	mm
Machine width	1.090	1.090	mm
Max installed power	22 + 5,5 + 10,8	22 + 5,5 + 9	kW



## MAIN FEATURES

TOUCH SCREEN CONTROL PANEL

PNEUMATIC YARN THREADING INTO THE HEATERS

ELECTRONIC SETTING OF SPINDLE SPEED AND TWIST NUMBER

ELECTRIC DRY HEATERS WITH 3 TEMPERATURE CONTROL POINTS

YARN SENSOR AND CUTTER ONTO EACH POSITION

CENTRALISED METER COUNTER DEVICE

FUME EXHAUST SYSTEM WITH EXTRACTOR FAN

YARN BREAKAGE SIGNAL LIGHT

TAKE-UP ONTO PLASTIC TUBE OR MUFF



## OPTIONALS

INVERTERISED TAKE-UP SHAFT

INVERTERISED SHAFT AFTER THE HEATER

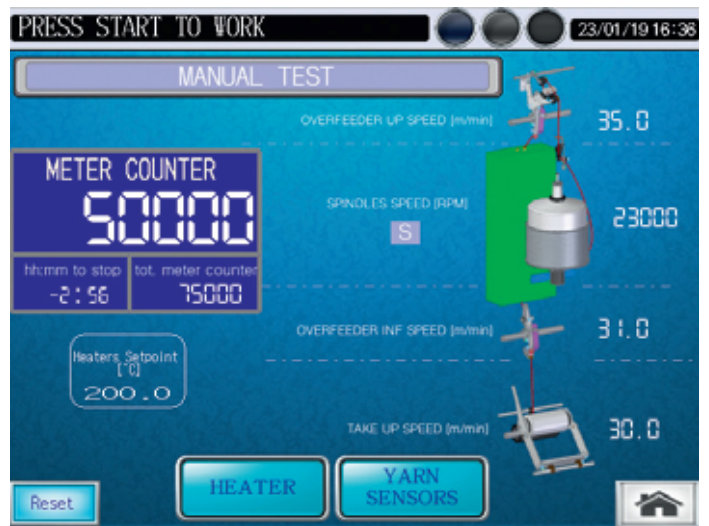
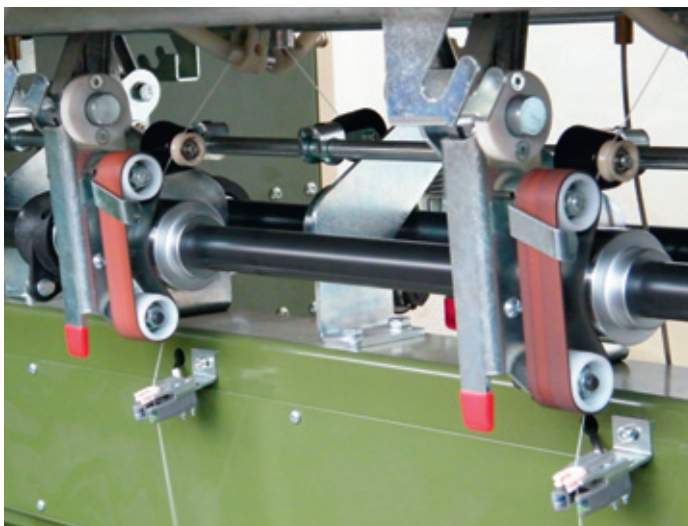
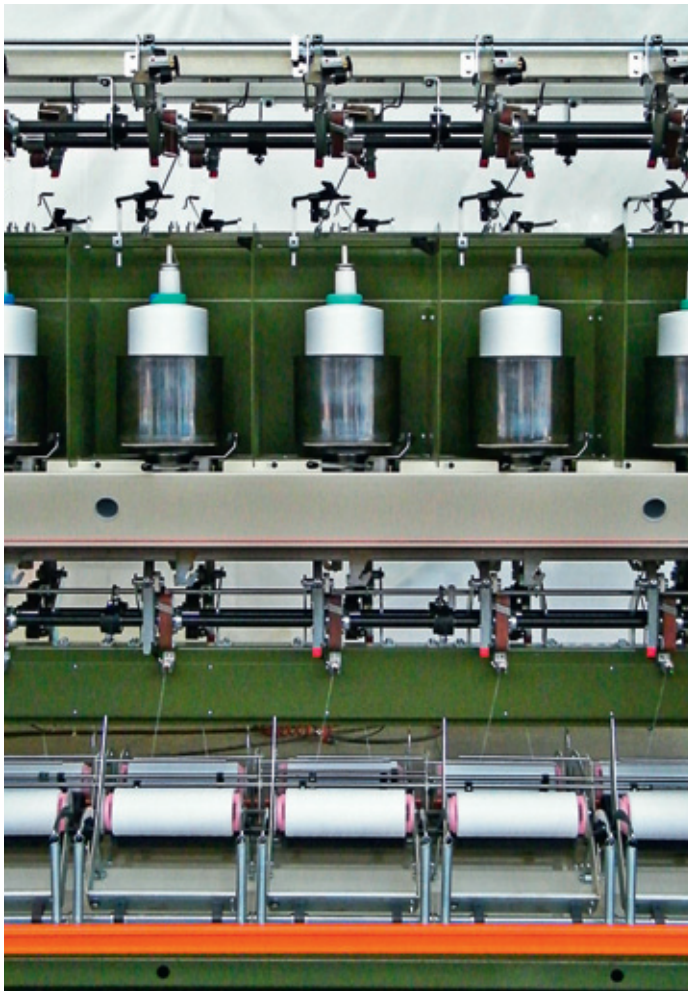
“INSPECTION WINDOWS” ON THE HEADSTOCK

REMOTE ASSISTANCE

MACHINE LINKING TO COMPANY NETWORK

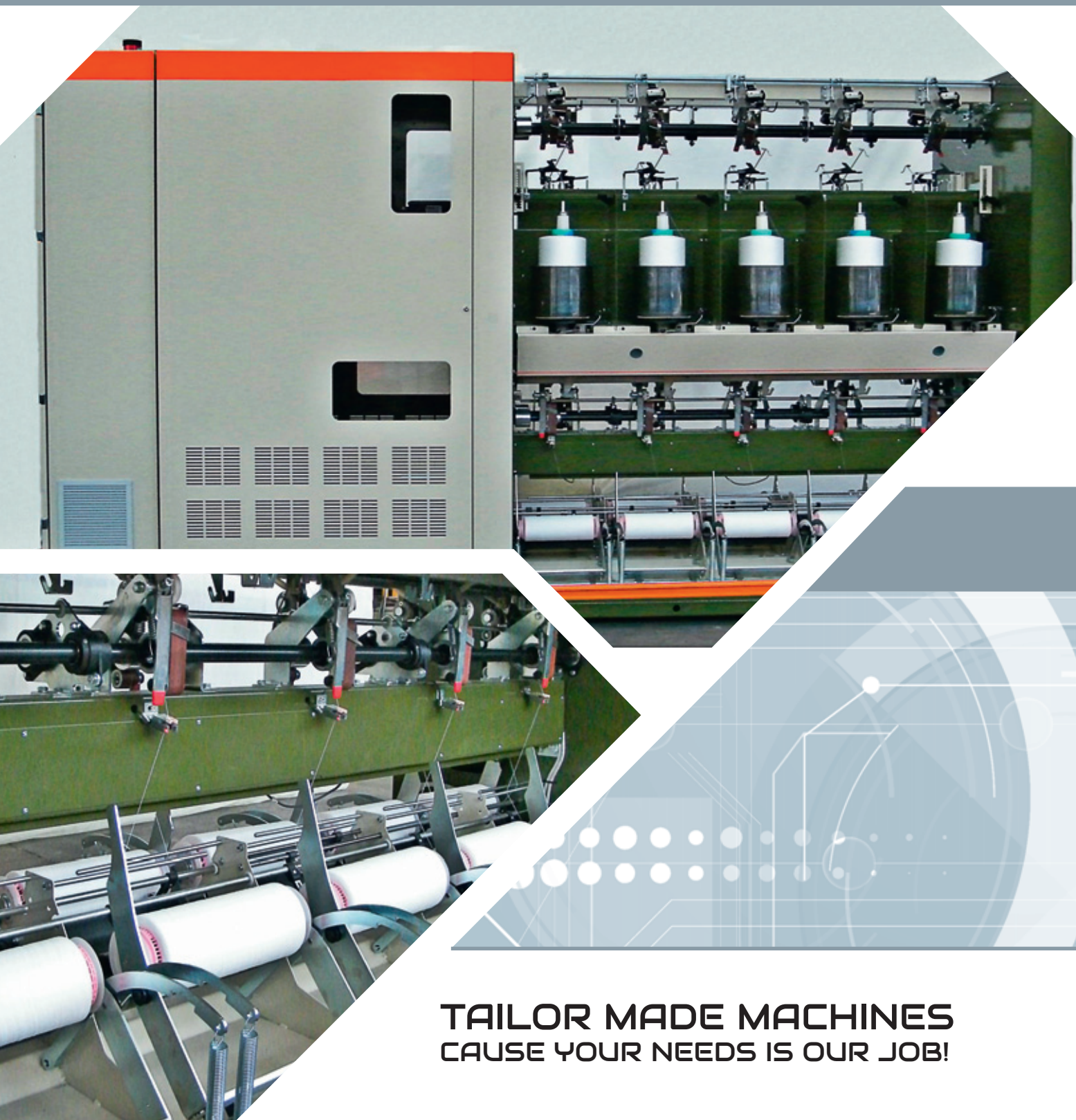
POSSIBILITY TO PERSONALISE THE MACHINE,  
ACCORDING TO THE CUSTOMER REQUIREMENTS





The data and images contained in this catalogue are indicative. The company reserves the right of making any modifications of technical-construction type without previous notice.





**TAILOR MADE MACHINES  
CAUSE YOUR NEEDS IS OUR JOB!**



**RATTI Luino S.r.l.**

Via Provinciale, 309 - 21030 Cassano Valcuvia (VA) - Italy  
Phone: +39 0332 538.411 - Fax +39 0332 530.988  
[info@rattiluino.com](mailto:info@rattiluino.com) - [www.rattiluino.com](http://www.rattiluino.com)

