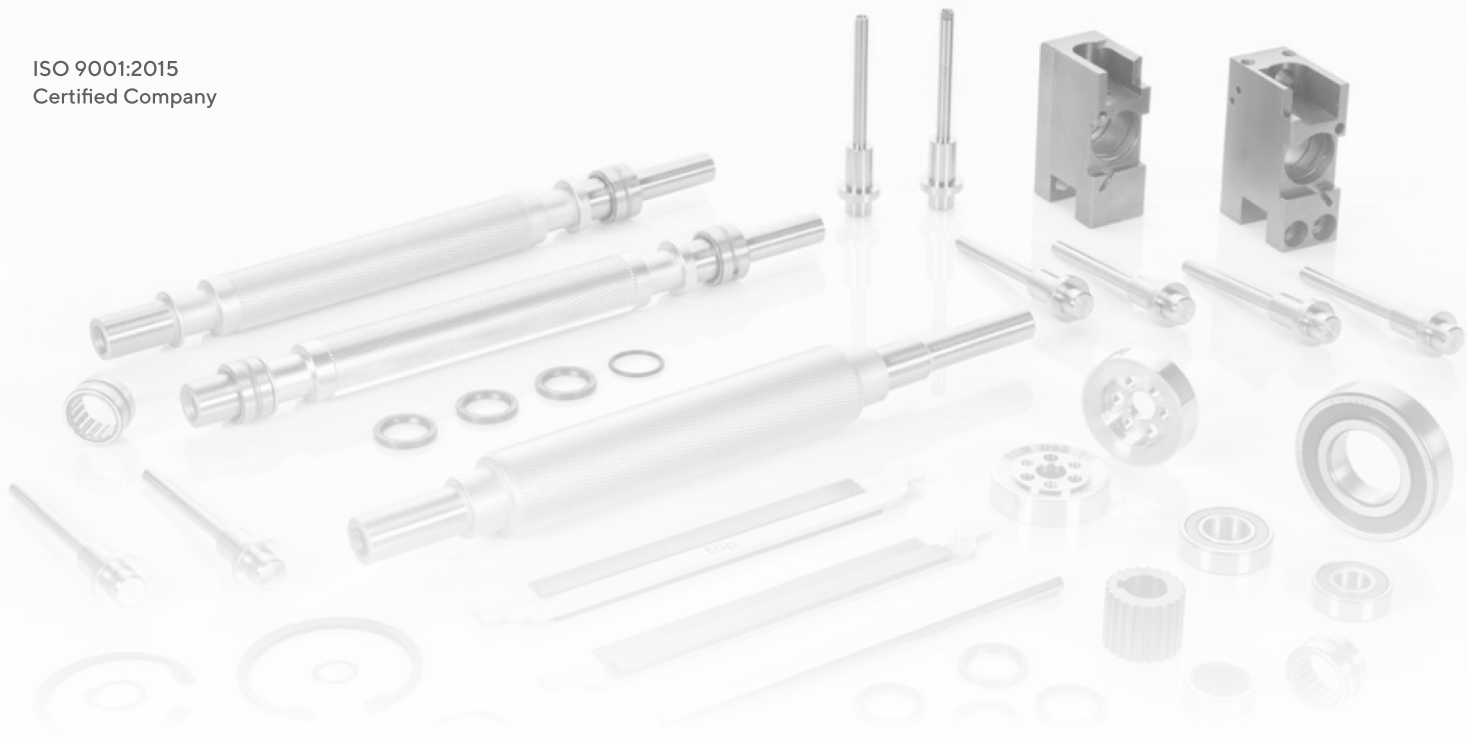


ISO 9001:2015  
Certified Company



A COMPLETE  
SOLUTION PROVIDER  
FOR *SPINNING INDUSTRY*  
PARTS & RETROFIT

**nachi tekneka**<sup>TM</sup>

PARTS ✓



**Not just parts!**

*Parts for solution & Parts with support.*

**nachi tekneka<sup>TM</sup>**

---

## Are you looking for just parts or parts with support and solution?

Apart from part manufacturer and trader, Nachi Tekneka is well known as a solution provider, which makes Nachi Tekneka stand out in the market. With decades of experience, we see end-users looking for parts that come with support and solutions, not just parts.

### *Parts from Nachi Tekneka*

- ✓ High-quality parts
- ✓ Maintaining the originality of the machine
- ✓ Customized solution by suggesting the specific parts
- ✓ Maintenance packages
- ✓ Training and guidance to mill technicians
- ✓ Onsite service by a technical expert
- ✓ Fine-tuning the quality parameters such as CV%, U%, and spectrogram
- ✓ Laboratory repair services
- ✓ 24/7 technical support by WhatsApp and E-mail

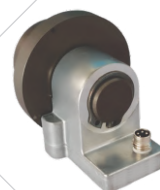
# ELECTRICAL PARTS

Switch Gear  
Limit Switches  
Cable  
Control unit  
Power Supply  
Brake Unit  
Lamp



# ELECTRONICS PARTS

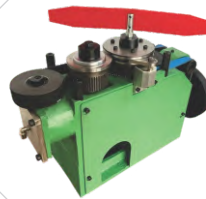
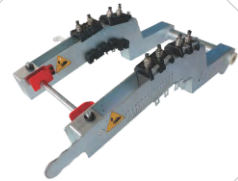
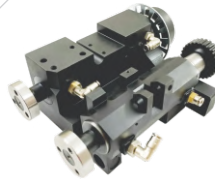
Sensor  
Encoder  
Controller  
PCB Board  
Display



# PNEUMATIC PARTS

Valve  
Cylinder  
Air Filter  
Pressure Sensor  
Seal Kit  
Gas Springs

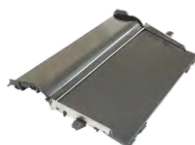
# MECHANICAL PARTS



Precision Parts  
Gear box  
Shaft

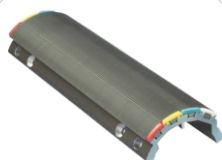
# MECHANICAL PARTS

Bottom Roller  
Top Roller  
Assemblies





# TECHNOLOGICAL PARTS



Circular Comb  
Top Comb  
Nipper Assembly  
Rotors  
Opening Roller  
Solid Rings  
Supporting Disc

nachi tekneka



## Nachi Preventive Maintenance Package



NPMP are set of parts offered for use in overhauls of Comber and Draw frame machines. The packages are recommended for machines running for a specific period and customized to each machine configuration.

Installing the right parts at the right time can improve the overall mill performance and reliability by reducing downtime. Over the years, our expert team has analyzed the time-based wear-out patterns for several performance-critical parts. Our offering provides different year-based maintenance packages for the best cost-effective solution

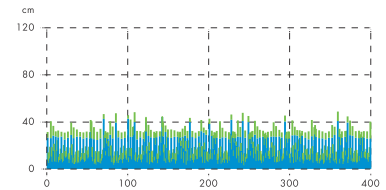
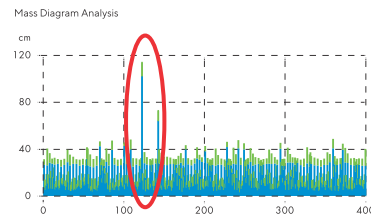
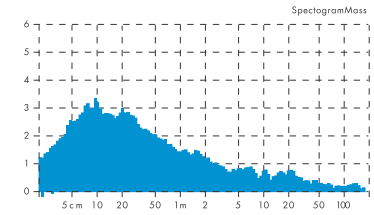
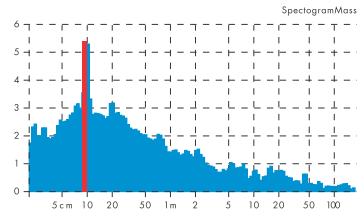
- ✓ Customized maintenance package
- ✓ Reduces machine downtime
- ✓ Achieving consistency in quality
- ✓ Increases machine's life
- ✓ Considerably lower price

MACHINE	MODEL	MAINTENANCE PACKAGE
Draw frame	SB 2, SB 20, SB-D 22, SB-D 40	2-year and 6-year packages
	SB-D 10, RSB-D 30, SB-D 15, RSB-D 35	2-year and 8-year packages
	RSB-D 22/24, RSB-D 40, RSB-D 45	2-year and 6-year packages
Comber	E 60, E 60H, E62, E66, E70R	2-year and 6-year packages
	Comber E 65, E 75	3-year and 6-year packages

## Onsite Services

### NACHI OFFERS FOLLOWING TECHNICAL ONSITE SERVICES

- ✓ Spectrogram analysis
- ✓ U% and CV% improvement
- ✓ Sliver Test(A%) improvement
- ✓ Mass diagram analysis
- ✓ Variable curve length analysis
- ✓ Auto leveler calibration
- ✓ Fine tuning the mechanical settings and systems
- ✓ Optimizing the machine setting according to textile process



### ADVANTAGES OF OUR TECHNICAL EXPERT

- Competent and fast support during the identification of faults and their rectification
- Repair / replacement of faculty components by experienced specialists
- Training and educating mill technicians to maintain and to achieve sliver quality

## Repair Services



### NACHI WORLD CLASS LABORATORY WITH STATE-OF-ART OF TEST SIMULATORS & EXPERIENCED ENGINEERS

- ✓ Component level repairs
- ✓ Replacement by original parts
- ✓ Inspection with respect to various parameters
- ✓ Defect free

“

**Not just parts.**  
*Parts for solution &  
Parts with support*

”

TRUSTED  
**500+**  
HAPPY CUSTOMERS

nachi tekneka™



**nachi tekneka**<sup>TM</sup>

1-4, Shiva Nagar, Kovaipudur,  
Coimbatore, Tamil Nadu 641042, INDIA  
Ph: +91 422 452 0091  
Mail us: [info@nachitekneka.com](mailto:info@nachitekneka.com)

[www.nachitekneka.com](http://www.nachitekneka.com)

