

翔

FINE JET^{WATER}

JET NOZZLES CHANGING VALVE & PUMP



Type54

TypeSC

TypeT

TypeTL

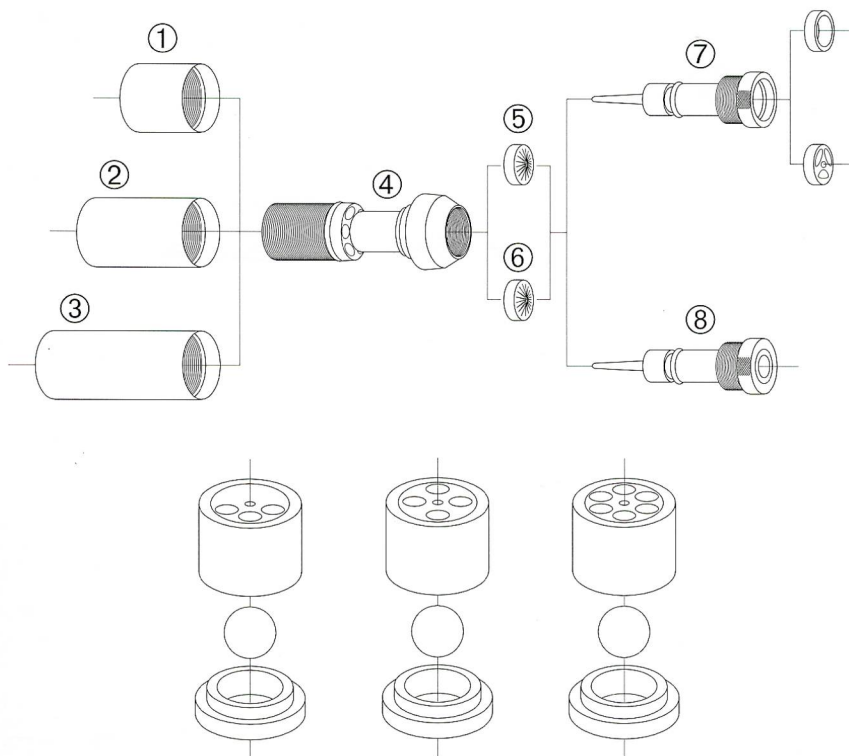


AWA SPINDLE CO., LTD.

80, Tenjin, Ymakawa-cho, Oe-gun, Tokushima, 779-3402, Japan.

Telephone **81883 42 4121**
Facsimile **81883 42 4125**

Type54



54TYPE NOZZLE BODY		
NAME	INSIDE DIA Φ	MARK
21	2.10	21
23	2.30	23
24	2.40	24
25	2.50	25
26	2.60	26
28	2.80	28

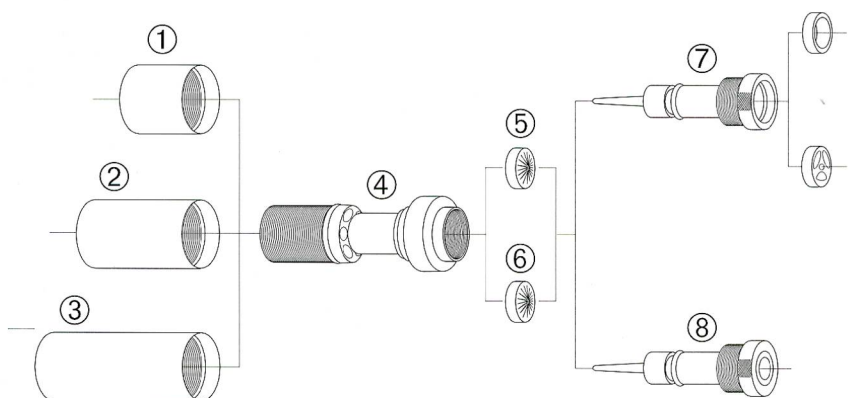
54TYPE STAINLESS STEEL NEEDLE		
OUTSIDE DIA Φ	INSIDE DIA Φ	MARK
1.4	1.0	14
1.6	1.0	16
1.8	1.2	18
2.0	1.4	20

54TYPE CERAMIC NEEDLE		
OUTSIDE DIA Φ	INSIDE DIA Φ	MARK
1.4	1.0	14
1.6	1.0	16
1.8	1.2	18

Φ	NAME	
22	3HOLES	VALVE SEAT
	4HOLES	VALVE SEAT
	6HOLES	VALVE SEAT

No.	NAME
①	NOZZLE NUT 6CHAMFERS L14mm
②	NOZZLE NUT 6CHAMFERS L24mm
③	NOZZLE NUT 6CHAMFERS L34mm
①	NOZZLE NUT STANDARD L14mm
②	NOZZLE NUT STANDARD L24mm
③	NOZZLE NUT STANDARD L34mm
④	NOZZLE BODY
⑤	STABILIZER 12FINS STANDARD
⑥	STABILIZER 12FINS LARGE HOLE
⑦	NOZZLE NEEDLE STAINLESS STEEL
⑧	NOZZLE NEEDLE CERAMIC

TypeSC&T



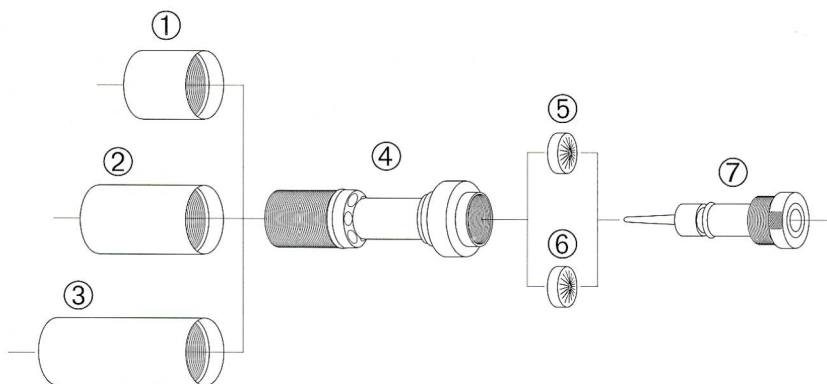
SC TYPE NOZZLE BODY		
NAME	INSIDE DIA Φ	MARK
10	2.10	10
15	2.15	15
20	2.20	20
30	2.30	30
45	2.45	45
55	2.55	55
60	2.60	60
75	2.75	75
90	2.90	90

SC TYPE STAINLESS STEEL NEEDLE		
NAME	INSIDE DIA Φ	MARK
0	0.8	10
2	1.0	20
4	1.2	40
6	1.4	60

T TYPE CERAMIC NEEDLE		
NAME	INSIDE DIA Φ	MARK
08	0.8	08
00	1.0	00
20	1.2	20
30	1.3	30
40	1.4	40
60	1.6	60

NO.	NAME
①	NOZZLE NUT 6CHAMFERS L14mm
②	NOZZLE NUT 6CHAMFERS L24mm
③	NOZZLE NUT 6CHAMFERS L34mm
①	NOZZLE NUT STANDARD L14mm
②	NOZZLE NUT STANDARD L24mm
③	NOZZLE NUT STANDARD L34mm
④	NOZZLE BODY
⑤	STABILIZER 12FINS
⑥	STABILIZER 14FINS
⑦	NOZZLE NEEDLE STAINLESS STEEL
⑧	NOZZLE NEEDLE CERAMIC

TypeTL



TL TYPE NOZZLE BODY		
NAME	INSIDE DIA Φ	MARK
09	1.90	09
00	2.00	00
10	2.10	10
20	2.20	20
30	2.30	30
40	2.40	40

TL TYPE CERAMIC NEEDLE			
NAME	INSIDE DIA Φ	OUTSIDE DIA Φ	MARK
08	0.80	1.10	08
00	1.00	1.30	00
10	1.10	1.40	10
20	1.20	1.50	20
30	1.30	1.60	30
40	1.40	1.70	40

※Cone angle of needle tip : 5°, 3°

NO.	NAME
①	NOZZLE NUT 6CHAMFERS L14mm
②	NOZZLE NUT 6CHAMFERS L24mm
③	NOZZLE NUT 6CHAMFERS L34mm
④	NOZZLE BODY
⑤	STABILIZER PLASTIC 12FINS
⑥	STABILIZER SUS 14FINS
⑦	NOZZLE NEEDLE CERAMIC

TypeSC.T&TL

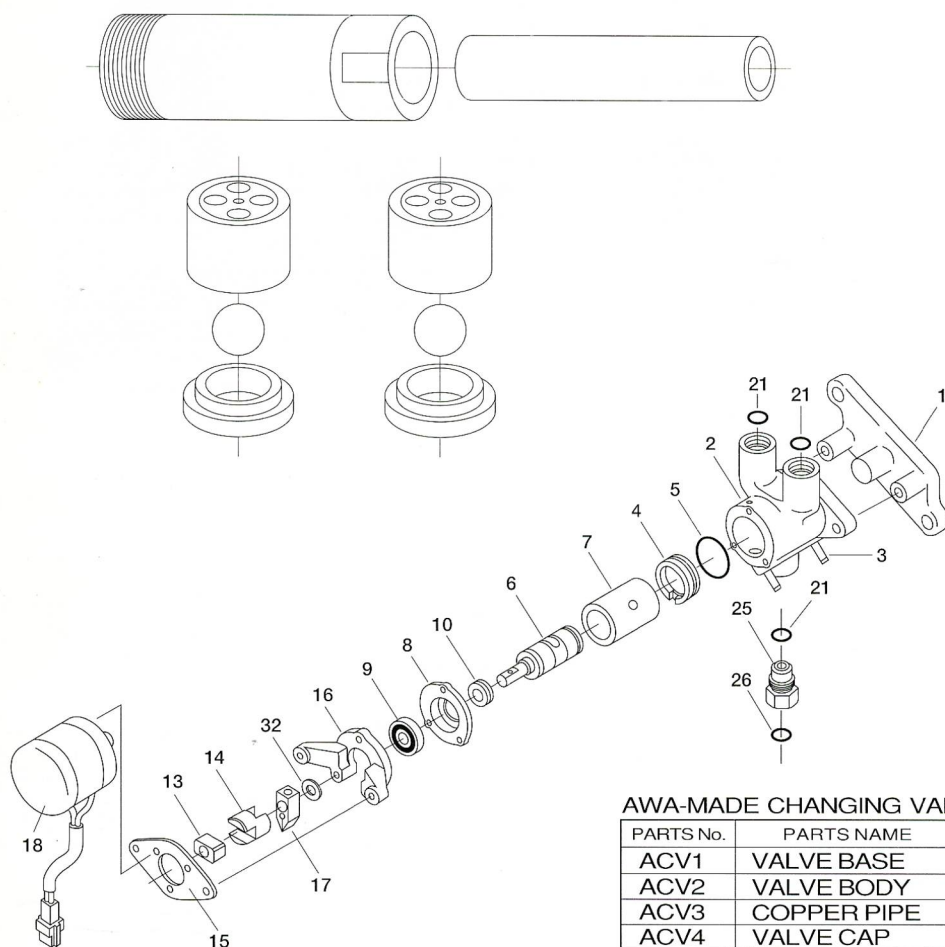
Φ		NAME
20	No.3	VALVE SEAT
	No.5	VALVE SEAT
	No.6	VALVE SEAT
	No.7	VALVE SEAT
	No.46	VALVE SEAT
	No.64	VALVE SEAT

Φ		NAME
20	No.5	VALVE SEAT
	No.6	VALVE SEAT
	No.7	VALVE SEAT
24	No.5	VALVE SEAT
	No.6	VALVE SEAT

TYPE	Φ	NAME
H	20	PLUNGER KIT
	22	PLUNGER KIT
	24	PLUNGER KIT
	26	PLUNGER KIT
	28	PLUNGER KIT
M(L)	18	PLUNGER KIT
	20	PLUNGER KIT
	22	PLUNGER KIT
	24	PLUNGER KIT

TYPE	INSIDE DIA Φ	OUTSIDE DIA Φ	NAME
MH	20	39	PLUNGER KIT
	22	39	PLUNGER KIT
	24	39	PLUNGER KIT

INSIDE DIA Φ	OUTSIDE DIA Φ	NAME
17	32	CERAMIC PLUNGER KIT
18	32	CERAMIC PLUNGER KIT
20	32	CERAMIC PLUNGER KIT
22	32	CERAMIC PLUNGER KIT

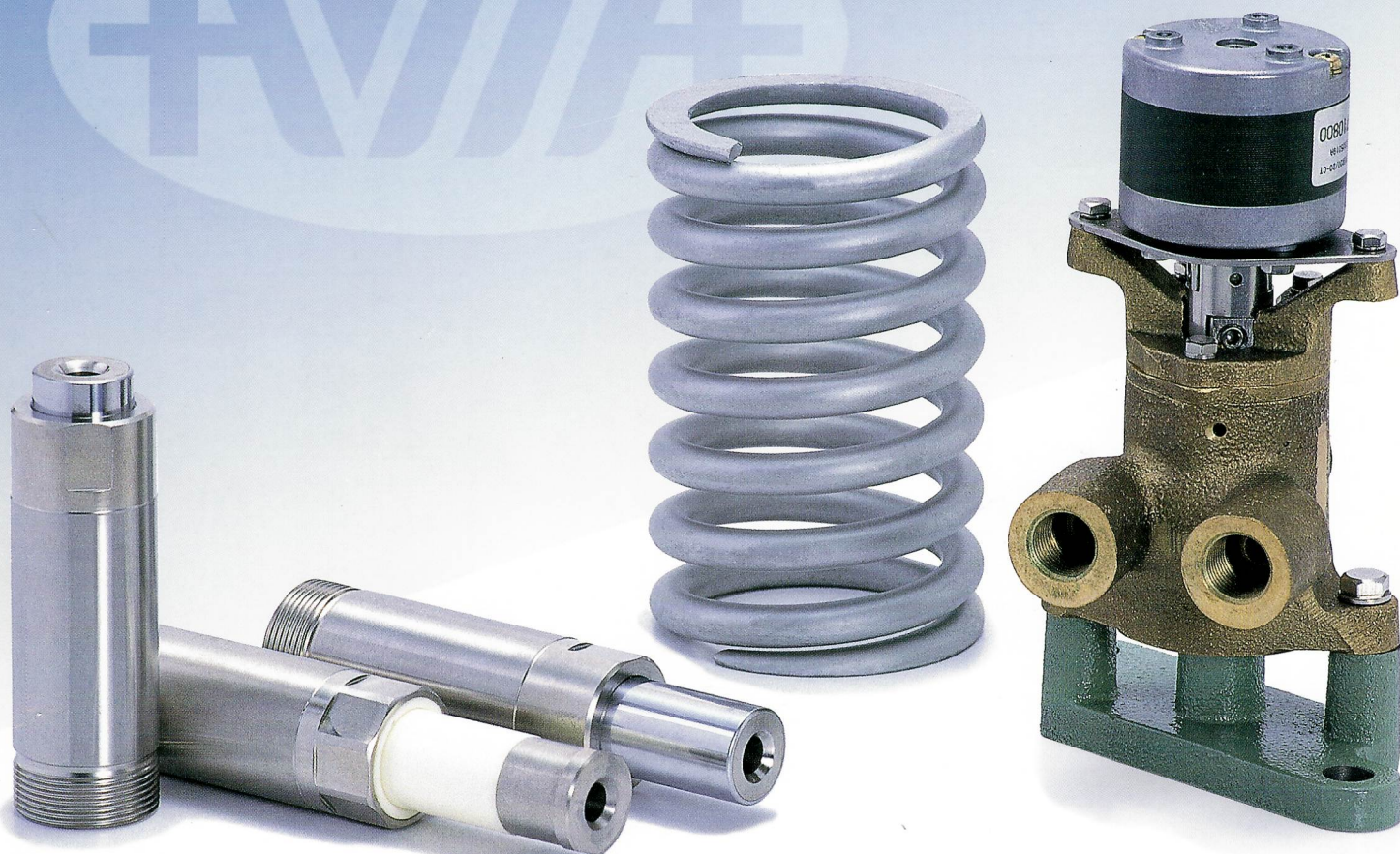


AWA-MADE CHANGING VALVE PARTS LIST

PARTS No.	PARTS NAME	QTY	PARTS No.	PARTS NAME	QTY
ACV1	VALVE BASE	1	ACV13	TORQUE ARM	1
ACV2	VALVE BODY	1	ACV14	ORDHAM'S COUPLER	1
ACV3	COPPER PIPE	2	ACV15	SOLENOID HOLDER	1
ACV4	VALVE CAP	1	ACV16	SOLENOID BRACKET	1
ACV5	O RING	1	ACV17	CONNECTOR	1
ACV6	SELECT ROTOR	1	ACV18	ROTALY SOLENOID	1
ACV7	LINER	1	ACV21	O RING	3
ACV8	BEARING CASE	1	ACV25	TUBE CONNECTOR	1
ACV9	BALL BEARING	1	ACV26	O RING	1
ACV10	V RING	1	ACV32	WASHER	1

These are for standard types. Ready enough to produce even a special type you require. Specifications shall be changed without notification.

QUALITY PRODUCTS
GOOD PRICE



AGENT

Representante Exclusivo no Brasil:

T **TABATEX**
COMÉRCIO E REPRESENTAÇÕES TÊXTEIS

Fone: (19) 3475.7757 | tabatex@tabatex.com.br